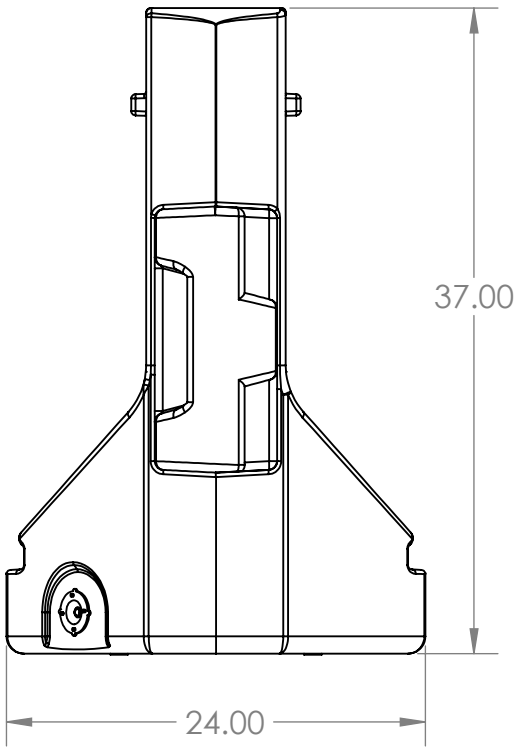
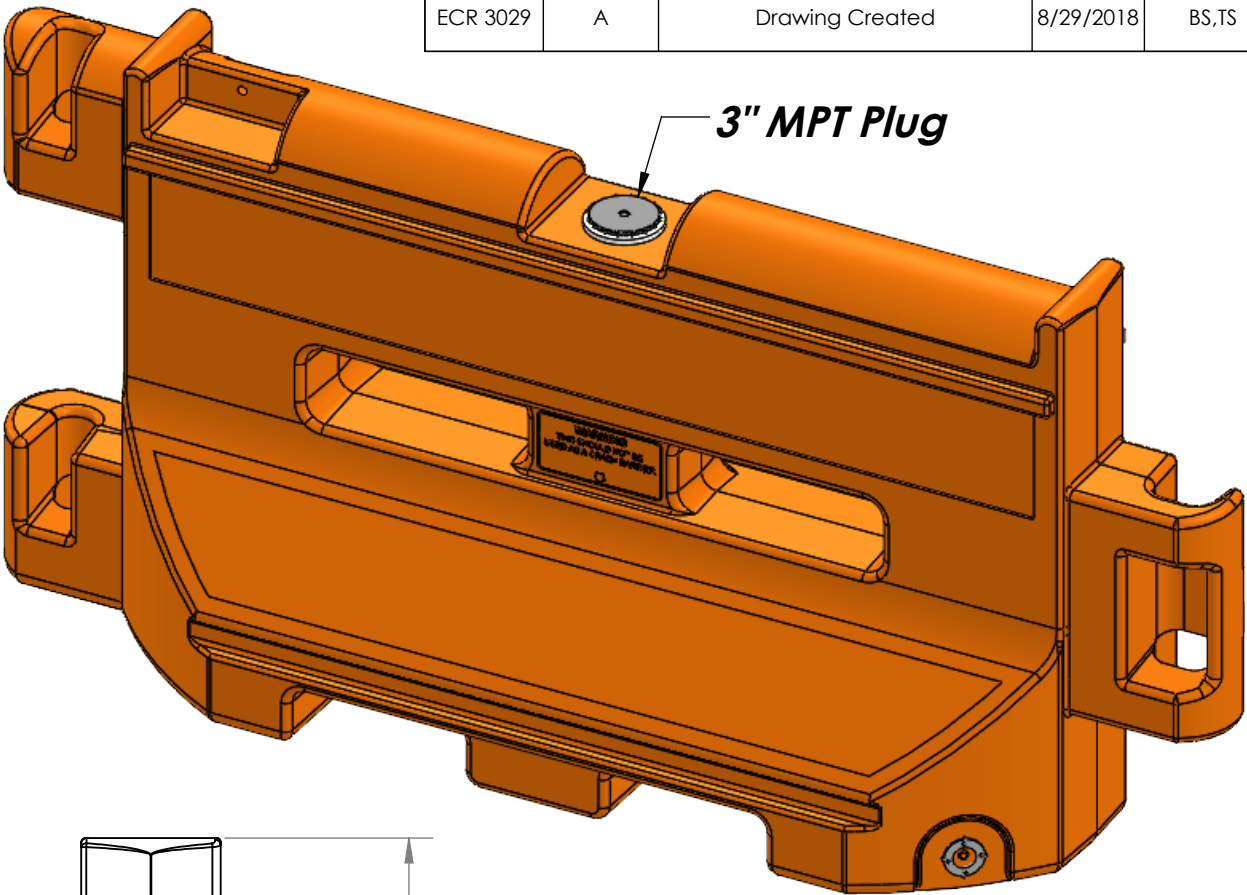
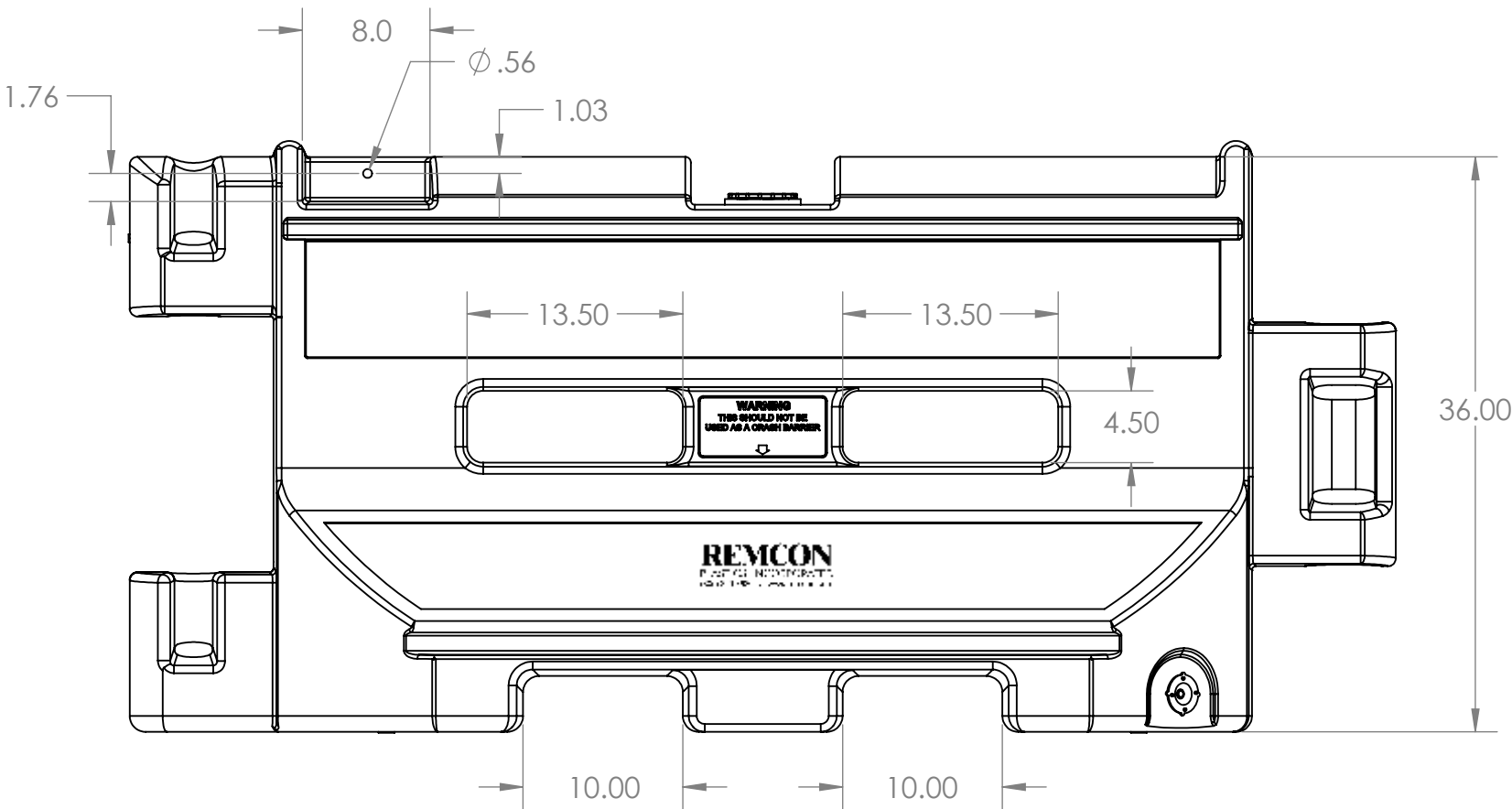
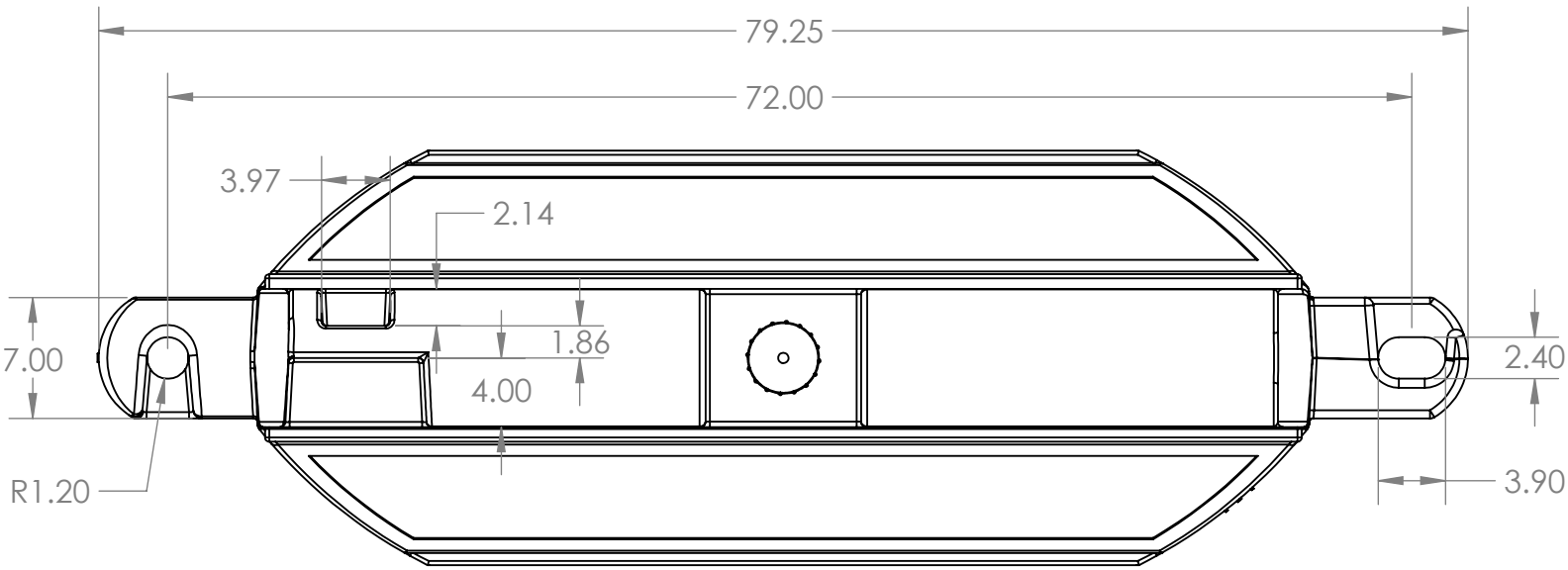


REVISIONS				
ECR/ECN	REV.	DESCRIPTION	DATE	APPROVED
ECR 3029	A	Drawing Created	8/29/2018	BS,TS



Inches of Water in Barricade	US LBS.	US GAL.	CU FT
16.6 (max)	600	63.47	8.48
15	574	60.4	8.07
12	508	52.4	7.00
9	410	40.72	5.44
6	282	25.38	3.39
3	156	10.29	1.38
0	71	n/a	n/a



PROPRIETARY AND CONFIDENTIAL

THE INFORMATION CONTAINED IN THIS DRAWING IS THE SOLE PROPERTY OF REMCON PLASTICS, INC. ANY REPRODUCTION IN PART OR AS A WHOLE WITHOUT THE WRITTEN PERMISSION OF REMCON PLASTICS, INC IS PROHIBITED.

UNLESS OTHERWISE SPECIFIED:

DIMENSIONS ARE IN INCHES
TOLERANCES:
FRACTIONAL $\pm 1/64$
ANGULAR: $\pm 1/2$ DEG
TWO PLACE DECIMAL $\pm .01$
THREE PLACE DECIMAL $\pm .005$

MATERIAL
Polyethylene
FINISH
SHOT PEENED
DO NOT SCALE DRAWING

	NAME	DATE
DRAWN BY:	BenS	8/29/18
APPROVED BY:		

TITLE:
-
2661 Remcon Guardsafe 36 Barricade

REMCON 208 Chestnut Street
PLASTICS, INCORPORATED Reading Pa, 19602
DWG. NO. 017003672001XXX
SIZE **B** SHEET 1 OF 1 REV **A**