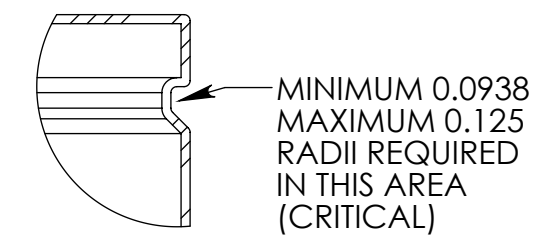
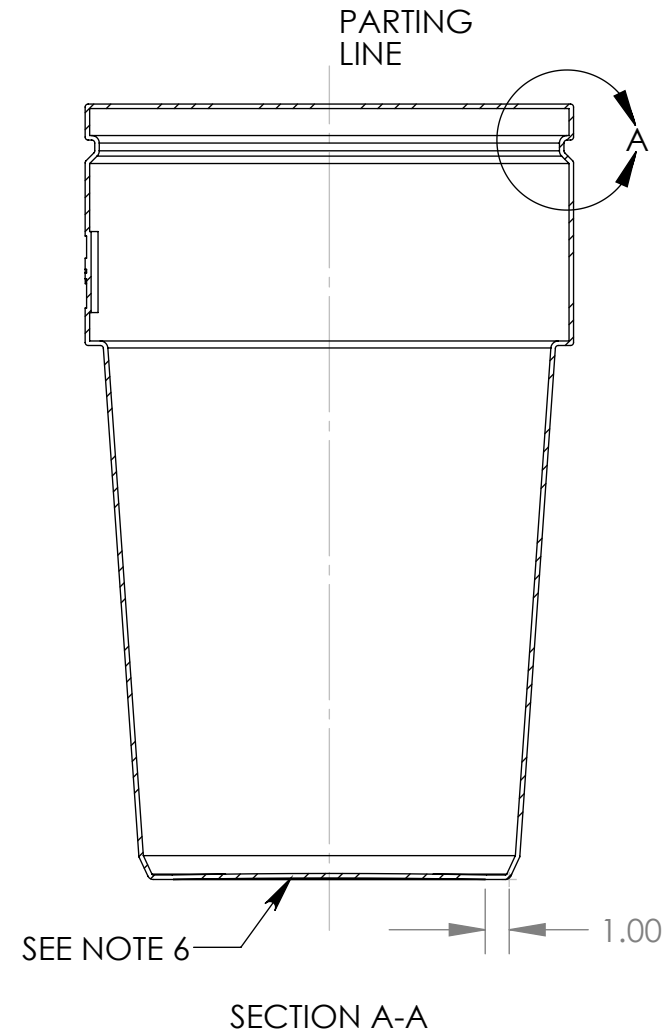
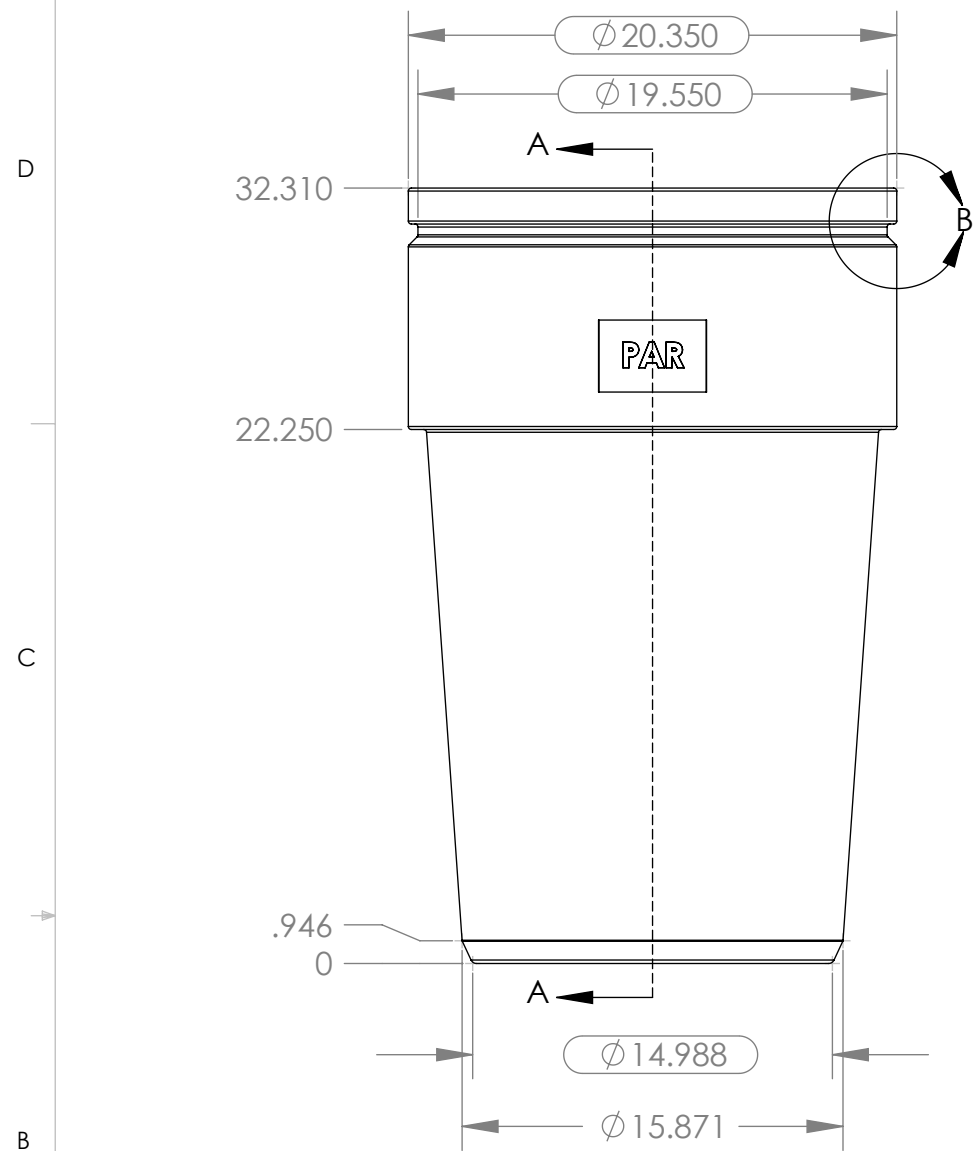
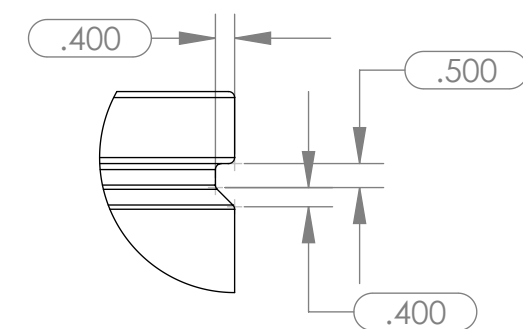


8 7 6 5 4 3 2 1

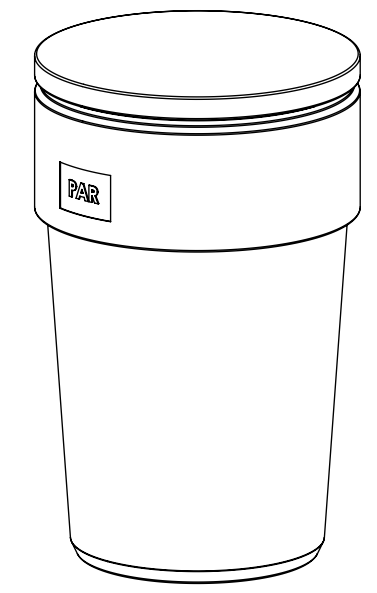
REVISIONS				
ZONE	REV.	DESCRIPTION	DATE	APPROVED
DETAIL C	B	CHANGED CUT HEIGHT OF TOP LIP (SHEET 2)	12/13/2006	PFE / TW
DETAIL C	C	CHANGED CUT HEIGHT OF TOP LIP (SHEET 2)	5/17/2007	PFE / RM



DETAIL A  
SCALE 1 : 4

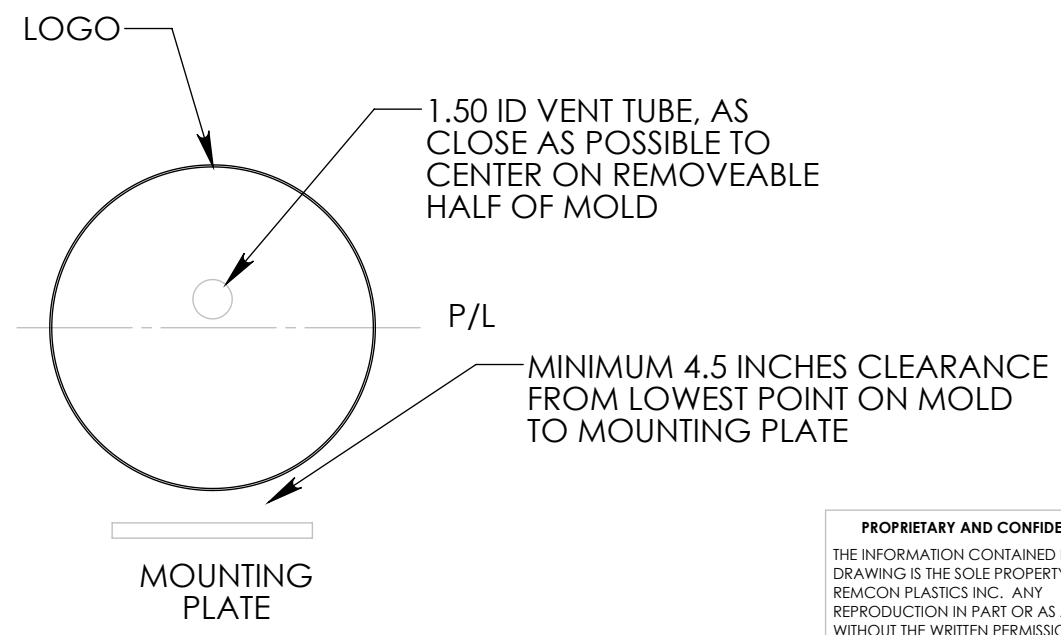


DETAIL B  
SCALE 1 : 4



NOTES:

1. SHEET 1 SHOWS AS-MOLDED DRUM,
2. SEE SHEET 2 FOR TRIMMING DETAILS AND ADDITIONAL INFORMATION
3. CRITICAL DIMENSIONS DENOTED WITH OVALS
4. ALL DIMENSIONS ARE TO THEORETICAL SHARP CORNERS
5. ALL CORNERS AND EDGES HAVE RADII
6. CERTAIN LOGICAL HIDDEN LINES OMITTED FOR CLARITY
7. BOTTOM OF DRUM HAS CONCAVE (INWARD) CROWN, STARTING AT 1.0 INCH OFFSET FROM OUTSIDE EDGE. CROWN HEIGHT TO BE MINIMUM 0.063 AND MAXIMUM 0.120
8. REFER TO PART GEOMETRY FOR ADDITIONAL INFORMATION

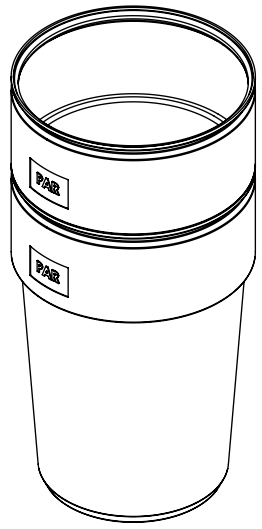


**PROPRIETARY AND CONFIDENTIAL**  
THE INFORMATION CONTAINED IN THIS DRAWING IS THE SOLE PROPERTY OF REMCON PLASTICS INC. ANY REPRODUCTION IN PART OR AS A WHOLE WITHOUT THE WRITTEN PERMISSION OF REMCON PLASTICS INC IS STRICTLY PROHIBITED.

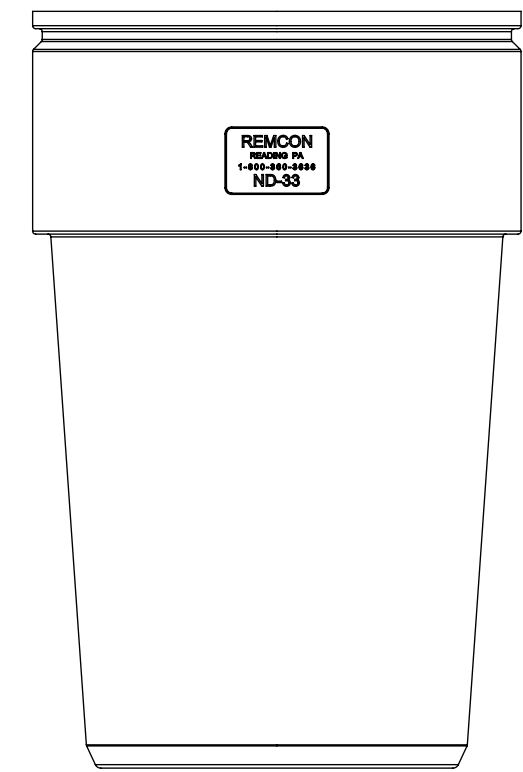
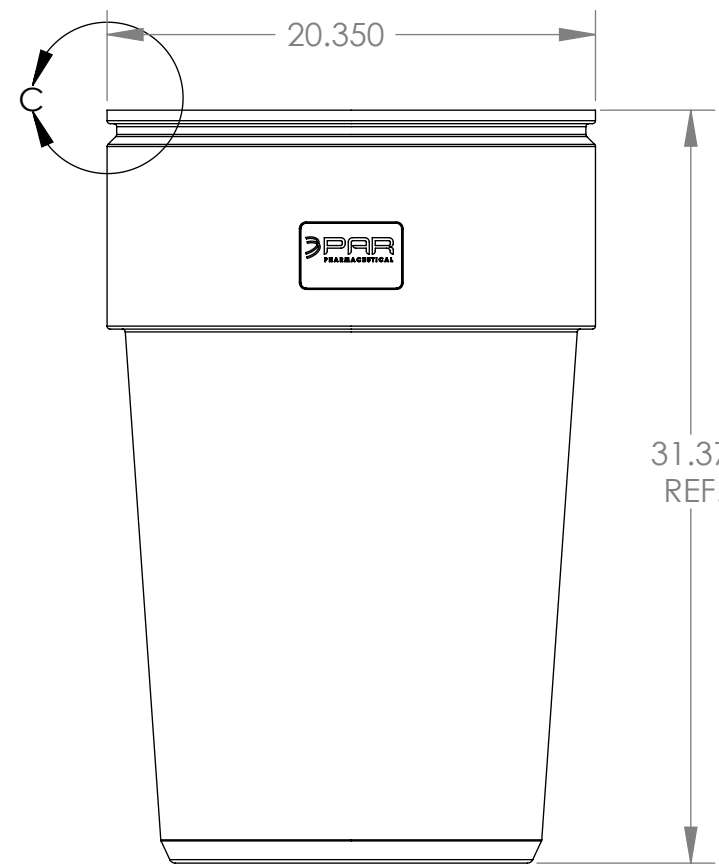
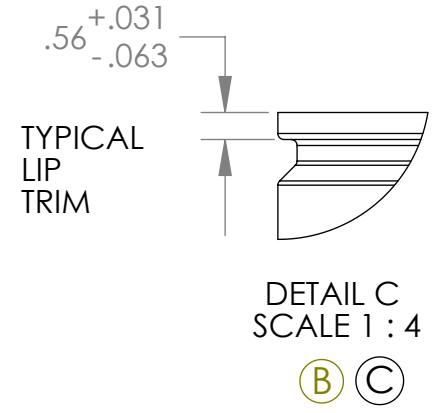
UNLESS OTHERWISE SPECIFIED:		NAME	DATE	Remcon Plastics Inc. 208 Chestnut Street, Reading Pa, 19602	
DIMENSIONS ARE IN INCHES		DRAWN	PFE	9/28/06	TITLE: <b>32 GAL NESTABLE DRUM (ND-33)</b>
TOLERANCES:		CHECKED	KM	9/28/06	
FRACTIONAL: ±1/64		ENG APPR.	KM	12/7/06	
ANGULAR: ±1/2DEG		MFG APPR.			
TWO PLACE DECIMAL ±.020 in/in		Q.A.			SIZE DWG. NO. REV
THREE PLACE DECIMAL ±.010 in/in		COMMENTS:			<b>B</b> 01100333200XXXX C
PROJECT NUMBER: 1647				SCALE: 1:8 WEIGHT: 14.6# SHEET 1 OF 2	
MATERIAL: LLDPE					
FINISH: SMOOTH					
NEXT ASSY	USED ON				
APPLICATION				DO NOT SCALE DRAWING	

8 7 6 5 4 3 2 1

8 7 6 5 4 3 2 1



2 DRUMS NESTED  
(NOT TO SCALE)



OPTIONAL CONFIGURATIONS  
(SEE TABLE)

SECONDARY REQUIREMENTS:

1. TRIM ALL PARTING LINES SMOOTH
2. CUT TOP AS PER DETAIL "C"
3. TRIM CUT EDGES AT TOP
4. CHECK FOR NESTABILITY
5. CHECK FIT AND FUNCTION OF LID AND RING (100%)
6. WIPE CLEAN AND PACKAGE FOR SHIPPING

CONFIGURATIONS AND OPTIONS

PART # SERIES	IDENTIFIER	CODING
011003332001XXX	PAR PHARMACEUTICAL LOGO	"XXX" DENOTES COLOR
011003332002XXX	REMCON PLASTICS LOGO	"XXX" DENOTES COLOR
05145215001ND33	ND-33 LID (NO GASKET)	OPTIONAL FEATURE
05145215000ND33	ND-33 PLASTIC L/L RING	OPTIONAL FEATURE

**PROPRIETARY AND CONFIDENTIAL**  
THE INFORMATION CONTAINED IN THIS DRAWING IS THE SOLE PROPERTY OF REMCON PLASTICS INC. ANY REPRODUCTION IN PART OR AS A WHOLE WITHOUT THE WRITTEN PERMISSION OF REMCON PLASTICS INC IS PROHIBITED.

UNLESS OTHERWISE SPECIFIED:		NAME	DATE	<b>Remcon Plastics Inc.</b> 208 Chestnut Street, Reading Pa, 19602 TITLE: <b>32 GAL NESTABLE DRUM (ND-33)</b>
DIMENSIONS ARE IN INCHES		DRAWN	PFE 9/28/06	
TOLERANCES:		CHECKED	KM 9/28/06	
FRACTIONAL ± 1/64		ENG APPR.	KM 12/7/06	
ANGULAR: ± 1/2 DEG		MFG APPR.		
TWO PLACE DECIMAL ± .020 in/in		Q.A.		SIZE DWG. NO. REV <b>B</b> 01100333200XXXX C
THREE PLACE DECIMAL ± .010 in/in		COMMENTS:		
PROJECT NUMBER: 1647				SCALE: 1:8
MATERIAL: LLDPE				WEIGHT: 14.6#
FINISH: SMOOTH				SHEET 2 OF 2
NEXT ASSY	USED ON			
APPLICATION: DO NOT SCALE DRAWING				

8 7 6 5 4 3 2 1