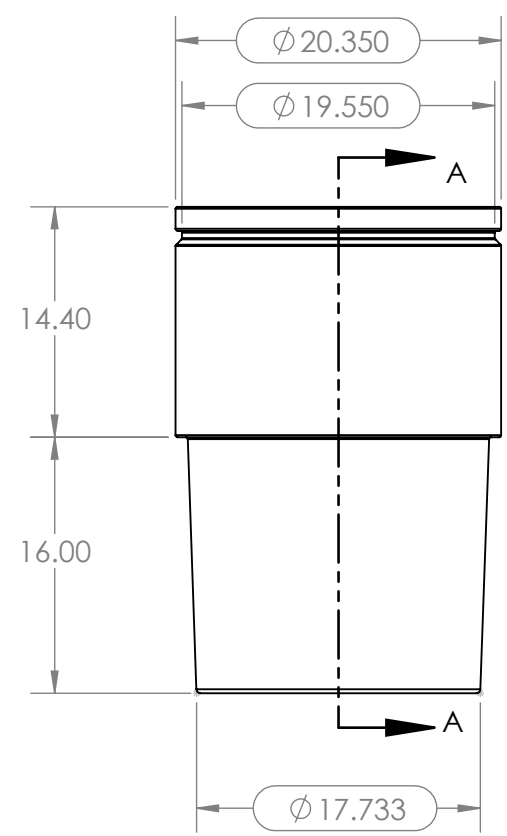
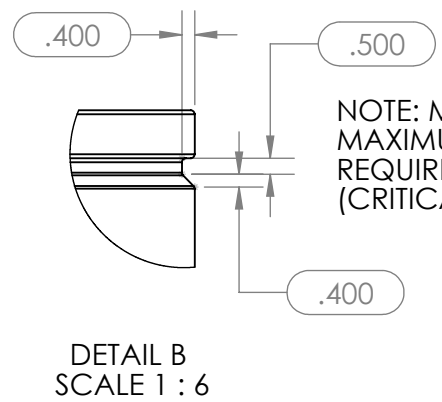
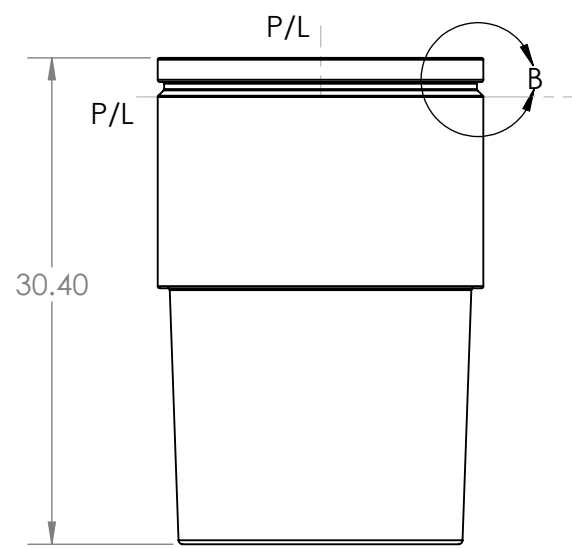


8 7 6 5 4 3 2 1

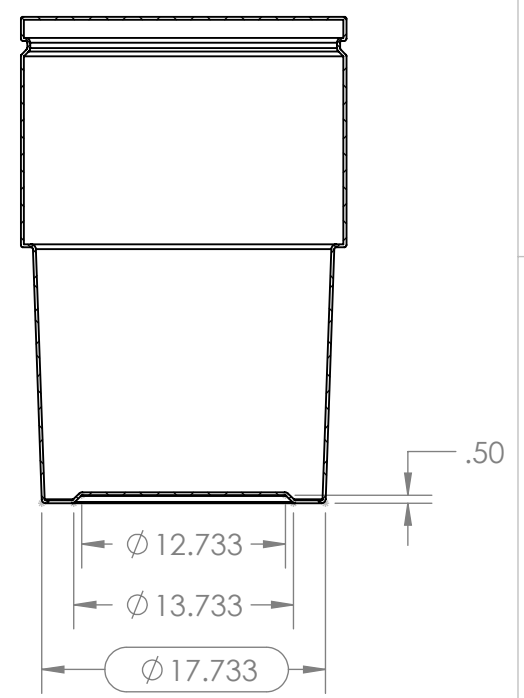


AS- MOLDED PART



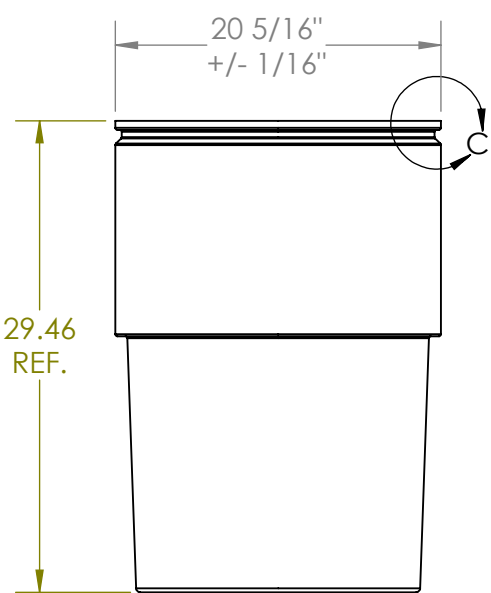
NOTE: MINIMUM 0.094  
MAXIMUM 0.125 RADII  
REQUIRED IN THIS AREA  
(CRITICAL)

SECTION A-A



- NOTES:
1. DRAWING SHOWS AS-MOLDED AND FINISHED PART
  2. ALL DIMENSIONS ARE TO THEORETICAL SHARP CORNERS
  3. ALL CORNERS AND EDGES HAVE RADII
  4. CERTAIN LOGICAL HIDDEN LINES OMITTED FOR CLARITY
  5. REFER TO PART GEOMETRY FOR ADDITIONAL DETAILS
  6. "XXX" IN DRAWING NUMBER FOR COLOR DESIGNATION

CHECK WITH  
GO/NO-GO  
FIXTURE



FINISHED PART



- SECONDARY REQUIREMENTS
1. TRIM ALL PARTING LINES SMOOTH
  2. CUT TOP AS PER DETAIL "C"
  3. TRIM CUT EDGES AT TOP
  4. CHECK TOP DIAMETER AND NESTABILITY
  5. CHECK FIT AND FUNCTION OF SNAP-ON LID OR LID AND RING (100%)
  6. WIPE CLEAN AND PACKAGE FOR SHIPPING
  7. STACK ON PALLET 4 STACKS, 5 HIGH, TOTAL 20 PER SKID

**PROPRIETARY AND CONFIDENTIAL**  
THE INFORMATION CONTAINED IN THIS DRAWING IS THE SOLE PROPERTY OF REMCON PLASTICS INC. ANY REPRODUCTION IN PART OR AS A WHOLE WITHOUT THE WRITTEN PERMISSION OF REMCON PLASTICS INC IS PROHIBITED.

REVISIONS				
ZONE	REV.	DESCRIPTION	DATE	APPROVED
A6	B	CHANGES TRIM DETAILS & INSTRUCTIONS	2/21/2012	PFE / KM

UNLESS OTHERWISE SPECIFIED:		NAME		DATE		Remcon Plastics Inc. 208 Chestnut Street, Reading Pa, 19602	
DIMENSIONS ARE IN INCHES		DRAWN	PFE	6/3/11		TITLE: <b>35 GALLON NESTABLE DRUM (ND-35)</b>	
TOLERANCES:		CHECKED	PFE	6/3/11			
FRACTIONAL: AS NOTED		ENG APPR.	KM	6/3/11			
ANGULAR: ±1/2DEG		COMMENTS:				SIZE DWG. NO. REV	
2 PLACE DECIMAL: ±0.020 in/in						<b>B</b> 011003529001XXX B	
3 PLACE DECIMAL: ± 0.010 in/in						SCALE: 1:12 WEIGHT: SHEET 1 OF 1	
PROJECT NUMBER: 2114		MATERIAL		FINISH			
		LLDPE		SMOOTH			
NEXT ASSY	USED ON	APPLICATION		DO NOT SCALE DRAWING			