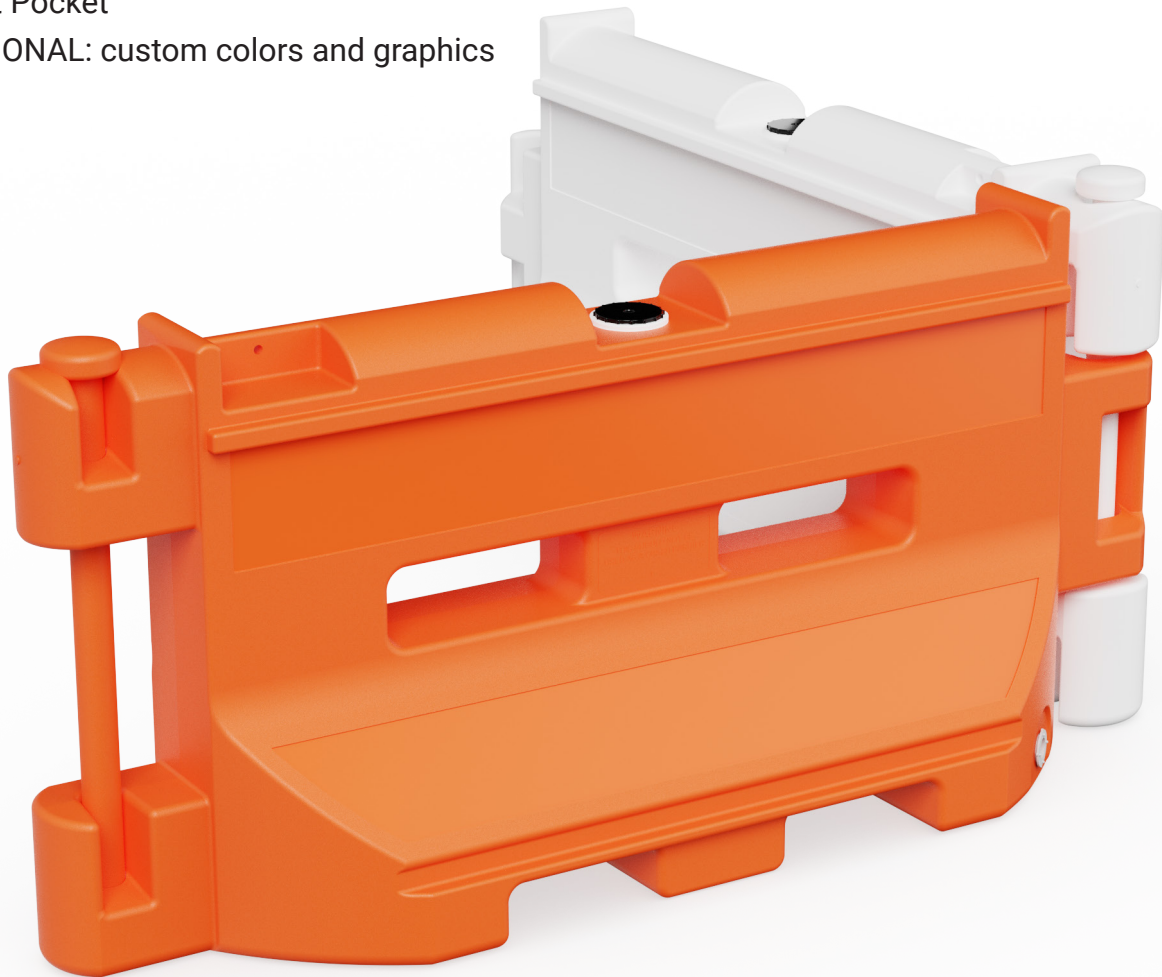


GS36

GUARDSAFE® 36 BARRICADE

OVERVIEW

- FHWA Eligible - MASH TL-1
- Meets MASH TL-2 Criteria - pending FHWA eligibility*
- Water-Filled Longitudinal Channelizing Device
- Threaded 6" Fill Port and 2" Drain at bottom
- Connect and Rotate 90 degrees using Pins
- Accepts Rolled Fence and/or Fence Panels
- 2 Forklift Pockets at Base
- Light Pocket
- OPTIONAL: custom colors and graphics



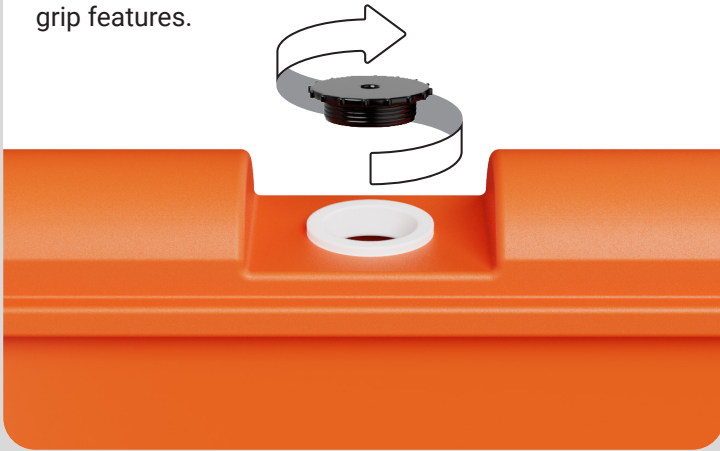
*contact Remcon Plastics for additional details

PRODUCT DESCRIPTION	LENGTH IN	WIDTH IN	HEIGHT IN	WEIGHT lbs
GUARDSAFE 36 LCD	72	24	36	70

INCHES OF WATER	U.S. LBS	U.S. GALLONS	CUBIC FEET
16.5	600	63.47	8.48
15	574	60.4	8.07
12	508	52.4	7
9	410	40.72	5.44
6	282	25.38	3.39
3	156	10.29	1.38

FILL PORT

3" threaded cap with grip features.

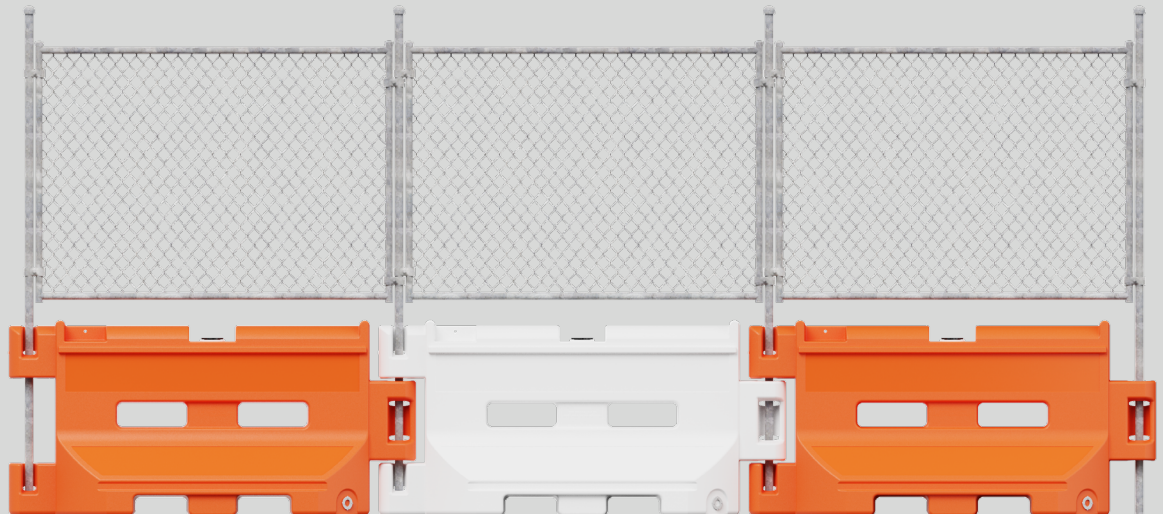


DRAIN PLUG

2" threaded cap. Requires 2" Bung Wrench to remove.

FENCING

Barricades accept fencing at the hinge point, providing same articulation that the pins allow.



*GS36 with fencing has not been MASH tested.