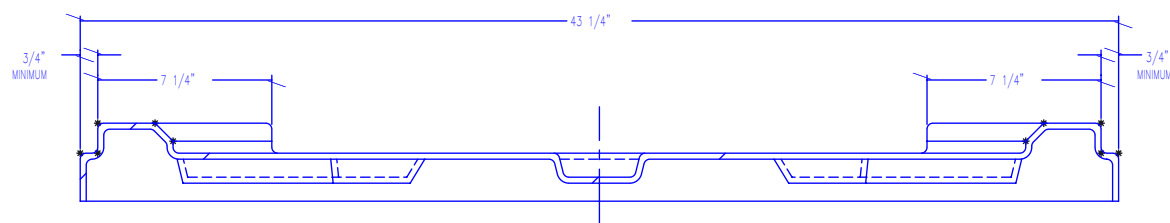
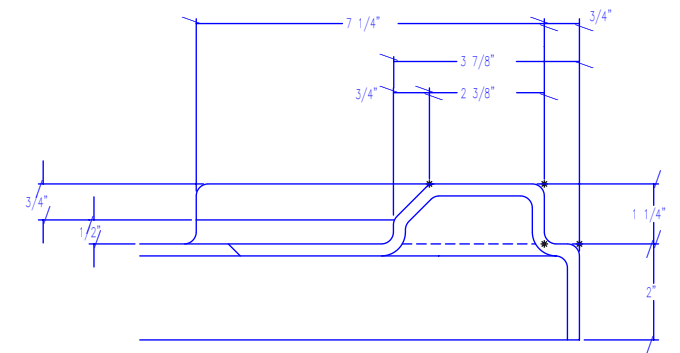


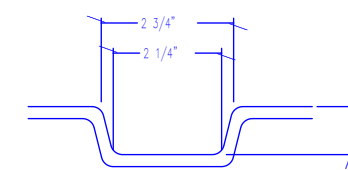
PLAN VIEW



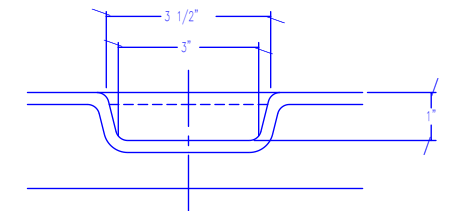
SECTIONAL PROFILE ON A-A



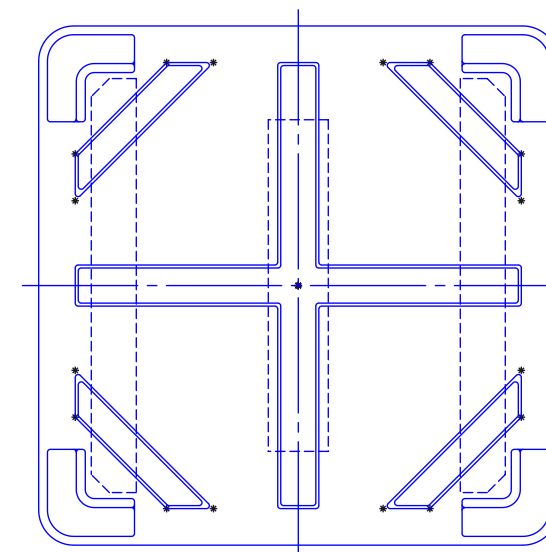
SECTIONAL PROFILE ON B-B FOR CORNER STAKING LUGS (SCALE 1:2, TYP 4 PLCS)



SECTIONAL PROFILE ON D-D FOR DIAGONAL RIBS (SCALE 1:2)



SECTIONAL PROFILE ON C-C FOR CENTER "CROSS" RIB (SCALE 1:2)



BIN FOOTPRINT TO LID INTERFACE SKETCH (NOT TO SCALE)

NOTES:

- DO NOT SCALE DRAWING.
  - DRAWING SHOWS FINISHED MOLDED LID FOR TR-33 BULK BIN - TRIMMED.
  - PART IS SQUARE AND SYMMETRICAL ABOUT BOTH CENTERLINES.
  - ALL DIMENSIONS ARE REFERENCED TO THEORETICAL SHARP CORNERS ON OUTSIDE SURFACE OF MOLDED PART, UNLESS OTHERWISE STATED.
  - UNLESS STATED OTHERWISE, ALL CORNERS WILL HAVE RADI.
- ALL UNSPECIFIED RADI TO BE 1/4" MINIMUM
- WALL THICKNESS SHOWN FOR REPRESENTATION ONLY.
  - CERTAIN LOGICAL HIDDEN LINES OMITTED FOR CLARITY.

TOLERANCES		REVISIONS			REVISIONS		REVISIONS	
EXCEPT AS NOTED		NO.	DATE	BY				
PLASTIC PART	FINISHED MOLD	1	01/27/99	PFE				
DECIMAL ±	DECIMAL ±	2						
0.010"	0.0625"	3						
PER INCH		4						
ANGULAR ±	ANGULAR ±	5						
1/2 DEG.	1/2 DEG.							

AGREEMENT TO MAINTAIN CONFIDENTIALITY  
 This drawing is owned by REMCON PLASTICS INC. and shall be returned upon demand. It is loaned on condition that it shall not be copied or reproduced or submitted to others without the Owner's consent. In accepting it subject to this condition the recipient further agrees that this drawing or any design, detail, or concept disclosed herein shall not be used in any way detrimental or in competition with the Owner.

REMCON PLASTICS INC.			
TITLE TR-33 BULK BIN LID			
STYLE-02			
DRAWN BY PFE	DATE 06/16/97	SHEET OF 1	DRAWING NO.
SCALE 1:4	INDEX NO. 03095	D-10432	