

0.25 DIA. HOLE IN TOP FLANGE FOR SECURITY TIE WHEN USED WITH CORRESPONDING LID (SEE CONFIGURATION TABLE FOR DETAILS)

**CONFIGURATION TABLE:**

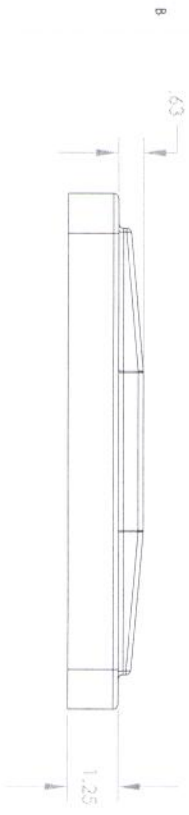
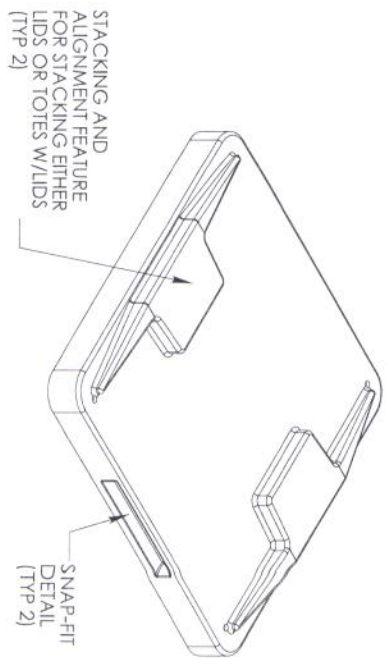
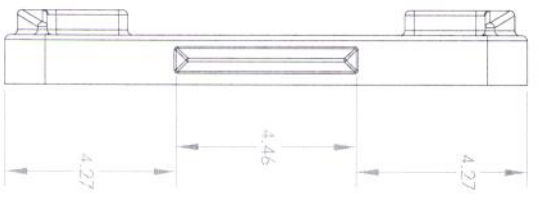
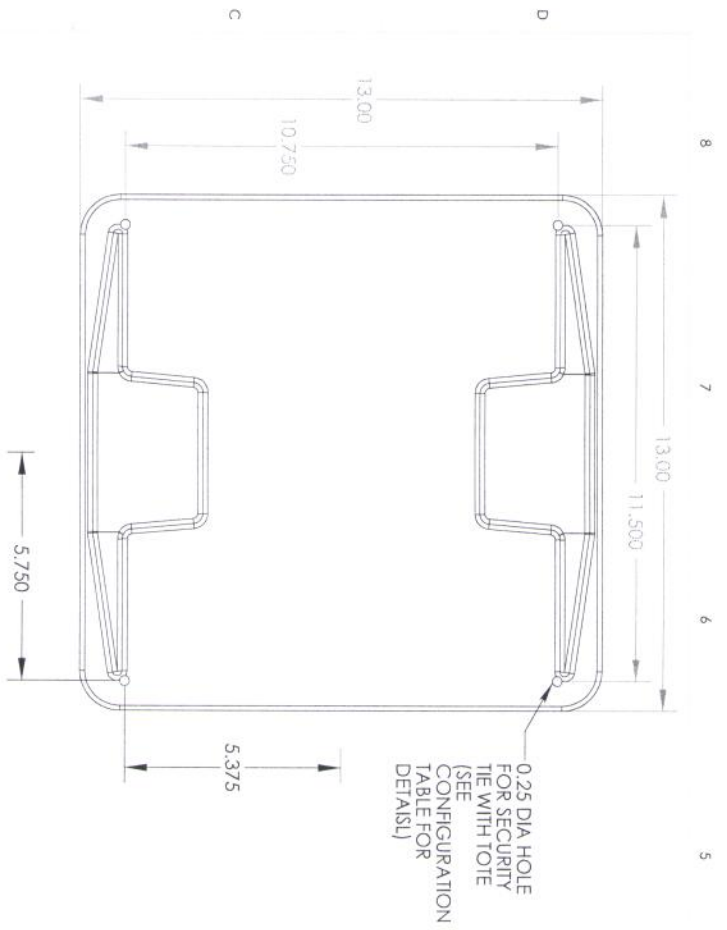
PART NO.	CONFIGURATION
011207106000XXX	STANDARD TOTE - NO SECURITY WIRE HOLES
011207106001XXX	STANDARD TOTE WITH 2 SECURITY WIRE HOLES LOCATED ON DIAGONAL CORNERS OF FLANGE
011207106002XXX	STANDARD TOTE WITH 4 SECURITY WIRE HOLES (AS SHOWN)

UNLESS OTHERWISE SPECIFIED:  
 DIMENSIONS ARE IN INCHES  
 TOLERANCES  
 FRACTIONAL: 1/32  
 ANGULAR: ±1/2 DEG  
 HOLE PLACE DECIMAL: ±.020 DIA  
 HOLE PLACE DECIMAL: 0.000 DIA  
 PROJECT NUMBER: 0001  
 MATERIAL: LLDPE  
 FINISH: SMOOTH  
 DO NOT SCALE DRAWING

NAME: Remcon Plastics Inc.  
 DATE: 9/15/06  
 PFE: 208 Chestnut Street, Reading Pa. 19602  
 TITLE: MD-7106 TABLET TOTE GENERAL SPECIFICATIONS

SCALE: 1:5 WEIGHT: 4.38# SHEET 1 OF 1

- NOTES:
1. DRAWING SHOWS FINISHED MOLDED PART - TRIMMED
  2. ALL DIMENSIONS ARE TO THEORETICAL SHARP CORNERS
  3. ALL CORNERS AND EDGES HAVE RADIUS
  4. CERTAIN LOGICAL HIDDEN LINES OMITTED FOR CLARITY
  5. CORRESPONDING LID DETAILS PROVIDED ON SEPARATE DRAWING



- NOTES**
- DRAWING SHOWS FINISHED MOLDED PART - TRIMMED
  - ALL DIMENSIONS ARE TO THEORETICAL SHARP CORNERS
  - ALL CORNERS AND EDGES HAVE RADI
  - CERTAIN LOGICAL HIDDEN LINES OMITTED FOR CLARITY
  - CORRESPONDING TOTE DETAILS PROVIDED ON SEPARATE DRAWINGS
  - LID FITS BOTH MD7105 AND MD7106 TOTES

**IMPORTANT AND CONFIDENTIAL**  
 THE INFORMATION CONTAINED BY THIS DRAWING IS THE PROPERTY OF REMICON PLASTICS INC. ANY REPRODUCTION IN PART OR AS A WHOLE WITHOUT THE WRITTEN PERMISSION OF REMICON PLASTICS INC. IS PROHIBITED.

8	7	6	5	4	3	2	1
---	---	---	---	---	---	---	---

**CONFIGURATION TABLE**

PART NO.	C ONFIGURATION
010201201001XXX	STANDARD LID - NO SECURITY WIRE HOLES
010201202001XXX	STANDARD LID WITH 2 SECURITY WIRE HOLES LOCATED ON DIAGONAL CORNERS
010201203001XXX	STANDARD LID WITH 4 SECURITY WIRE HOLES (AS SHOWN)

"XXX" IS MATERIAL / COLOR DESIGNATION CODE

UNLESS OTHERWISE SPECIFIED:  
 DIMENSIONS ARE IN INCHES  
 TOLERANCES:  
 FRACTIONAL: 1/32  
 ANGULAR: 1/2 DEG  
 HOLE: ±.002  
 HOLE POSITION: ±.005  
 HOLE PLACEMENT: ±.010  
 HOLE SIZE: ±.005

NAME	DATE	REVISION	DESCRIPTION
REMICON	9/15/06	208	Remicon Plastics Inc., 208 Chestnut Street, Reading Pa. 19602
DRAWN	9/15/06	KM	MD7105/7106 TABLET TOTE LID - GENERAL SPECIFICATIONS
CHECKED			
ENG APPR.			
PROJ. NO.	0001	G.A.	COMMENTS:
MATERIAL	LLDPE		SIZE DWG. NO.
FINISH	SMOOTH		B 01020120X001XXX
DO NOT SCALE DRAWING			REV A

SCALE: 1:3 WEIGHT: 1.75# SHEET 1 OF 1