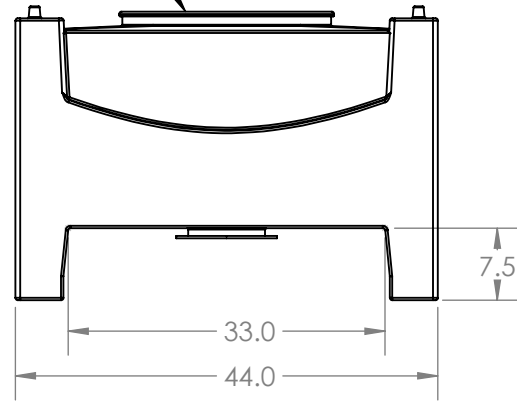
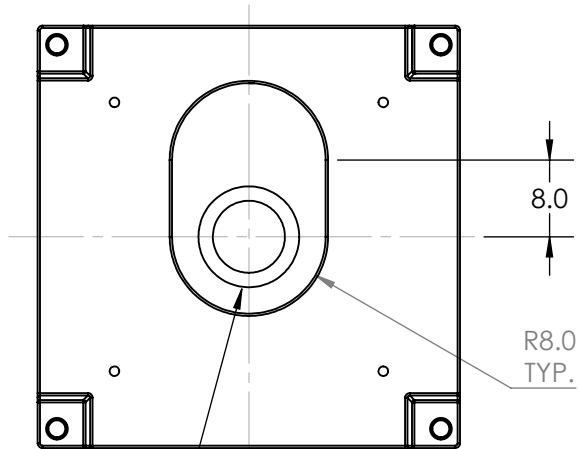
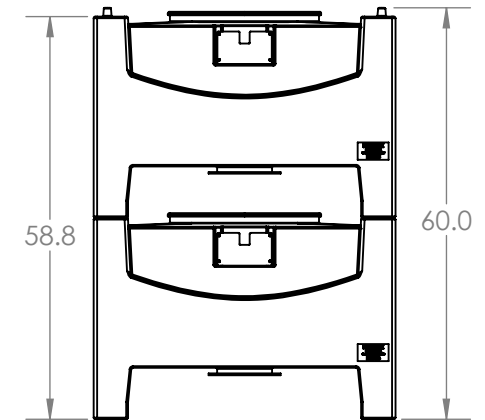
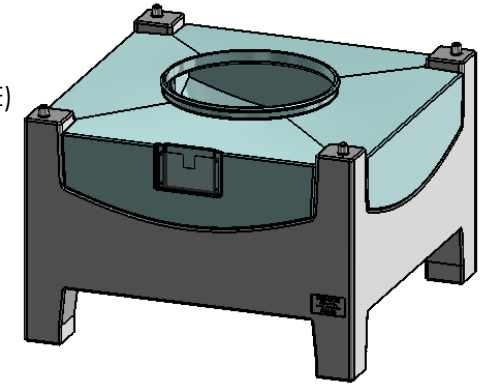


CONSULT REMCON FOR LID AND RING OPTIONS



ISOMETRIC SKETCH (NOT TO SCALE)



NOTES:

1. DRAWING SHOWS FINISHED MOLDED PARTS
2. INLET AND VALVE OPTIONS NOT SHOWN
3. ALL CORNERS AND EDGES HAVE RADII
4. ALL DIMENSIONS TO THEORETICAL SHARP CORNERS
5. CONSULT REMCON FOR DETAILS NOT SHOWN

8" DISCHARGE NECK W/FLANGE TO SUIT VALVE PER APPLICATION

PROPRIETARY AND CONFIDENTIAL
 THE INFORMATION CONTAINED IN THIS DRAWING IS THE SOLE PROPERTY OF REMCON PLASTICS INC. ANY REPRODUCTION IN PART OR AS A WHOLE WITHOUT THE WRITTEN PERMISSION OF REMCON PLASTICS INC. IS STRICTLY PROHIBITED.

		UNLESS OTHERWISE SPECIFIED:		NAME	DATE
		DIMENSIONS ARE IN INCHES	DRAWN	PFE	8/7/12
		TOLERANCES:	CHECKED	PFE	8/7/12
		FRACTIONAL: N/A	ENG APPR.	KM	8/7/12
		ANGULAR: ± 1/2 deg			
		DECIMAL: ± 0.010 in/in			
		ENGINEERING PROJECT #:	COMMENTS:		
		PROPRIETARY UPDATES			
		MATERIAL			
		LLDPE			
NEXT ASSY	USED ON	FINISH			
		SMOOTH			
APPLICATION		DO NOT SCALE DRAWING			

Remcon Plastics Inc.
 208 Chestnut Street, Reading Pa, 19602

TITLE:
 RH-13 HOPPER & BASE
 W/ 2 3/4" EXTENDED LEGS
 GENERAL SPECIFICATIONS

SIZE	DWG. NO.	REV
A	012001300004XXX	A

SCALE: 1:24 WEIGHT: SHEET 1 OF 1