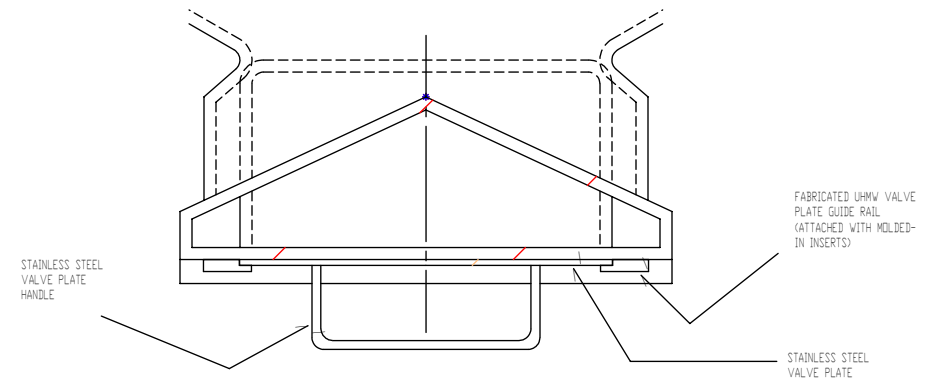
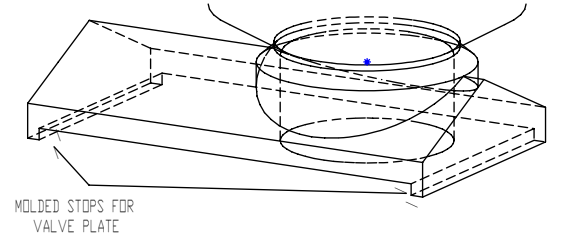


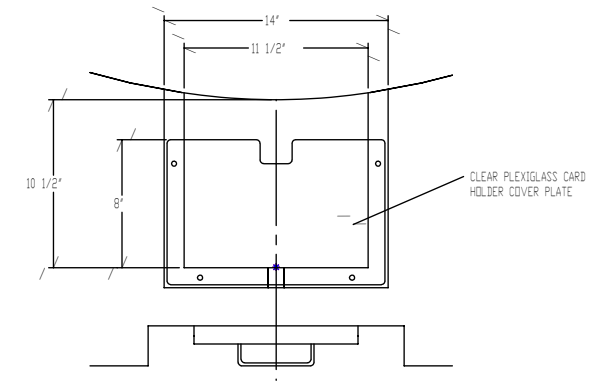
PLAN VIEW



SECTIONAL PROFILE ON A-A FOR VALVE DETAILS (SCALE 1:2)

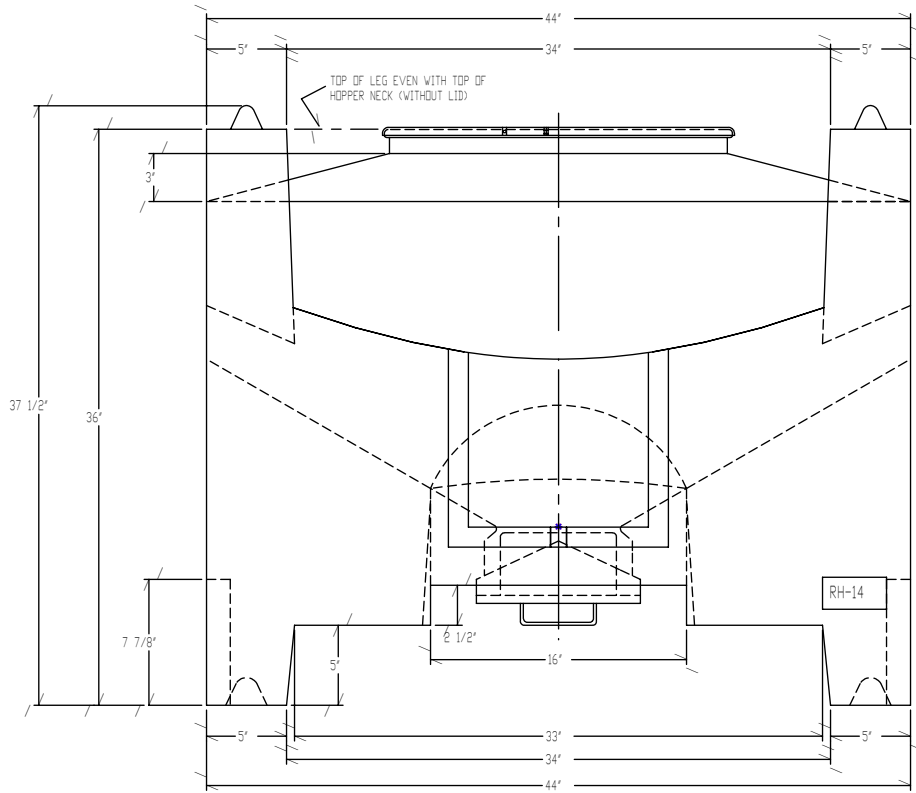


3D CONCEPT SKETCH OF VALVE BODY (NOT TO SCALE)

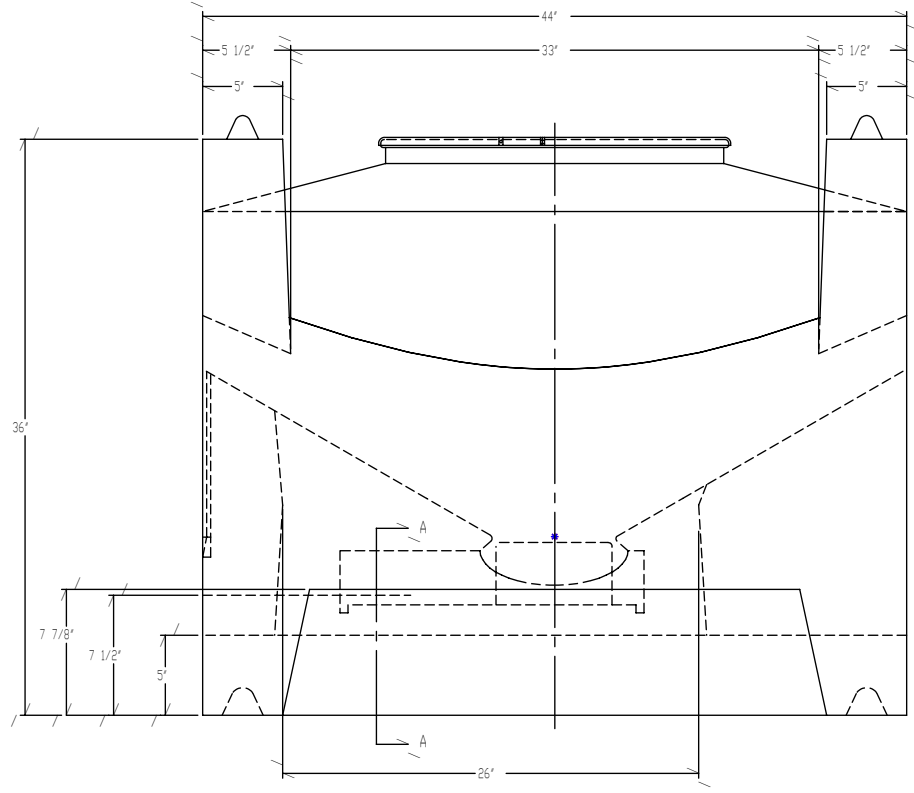
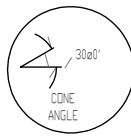


FRONT ELEVATION VIEW OF CARD HOLDER RECESS AND COVER PLATE

- NOTES:
1. DO NOT SCALE DRAWING.
 2. DRAWING SHOWS FINISHED MOLDED PARTS - TRIMMED. SHOWN ARE HOPPER WITH MOLDED-IN VALVE BODY, CUSTOM BASE, AND STANDARD 21" LEVER-LOCK LID.
 3. ALL DIMENSIONS ARE REFERENCED TO THEORETICAL SHARP CORNERS ON OUTSIDE SURFACE OF MOLDED PART, UNLESS OTHERWISE STATED.
 4. UNLESS STATED OTHERWISE, ALL CORNERS WILL HAVE RADIUS.
 5. WALL THICKNESS SHOWN FOR REPRESENTATION ONLY.
 6. CERTAIN LOGICAL HIDDEN LINES OMITTED FOR CLARITY.
 7. APPROXIMATE INTERNAL DISPLACEMENT VOLUME: 14.94 CU/FT.
 8. ADDITIONAL VALVE DETAILS PROVIDED ON SEPARATE DRAWING.



FRONT ELEVATION



SIDE ELEVATION

TOLERANCES	REVISIONS			REMCON PLASTICS INC.	
EXCEPT AS NOTED	NO.	DATE	BY	TITLE	SHEET OF
DECIMAL ± S.R.M.T.	1	02/09/96	PFE	RH-14 HOPPER & BASE	1
FRACTIONAL ± S.R.M.T.	2	05/24/96	PFE	GENERAL SPECIFICATIONS	
ANGULAR ± S.R.M.T.	3			DRAWN BY PFE	DATE 10/03/95
	4			SCALE 1:6	INDEX NO. 01370
	5				DRAWING NO. D-10402