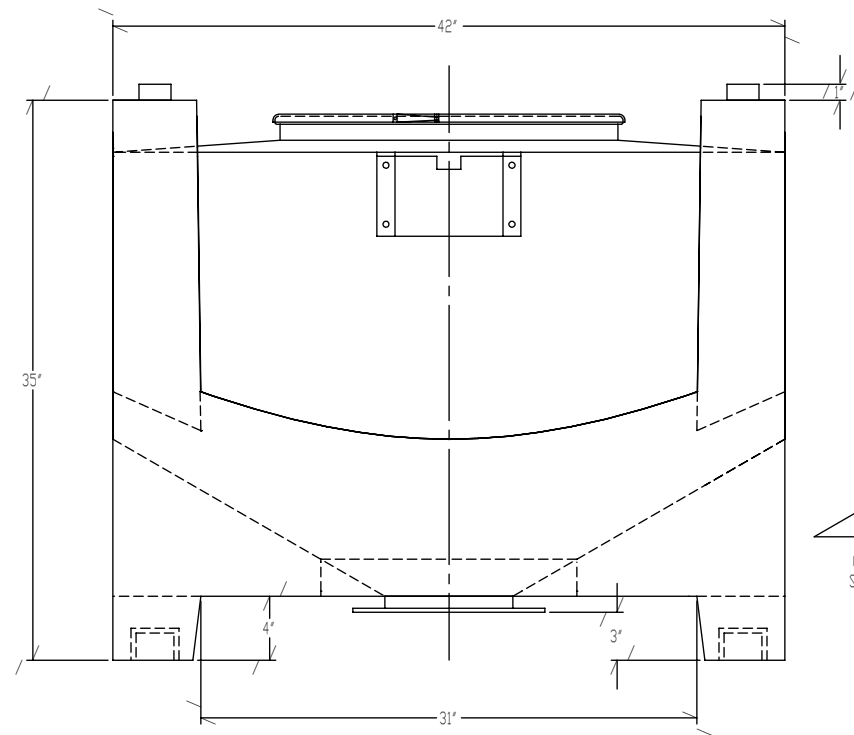
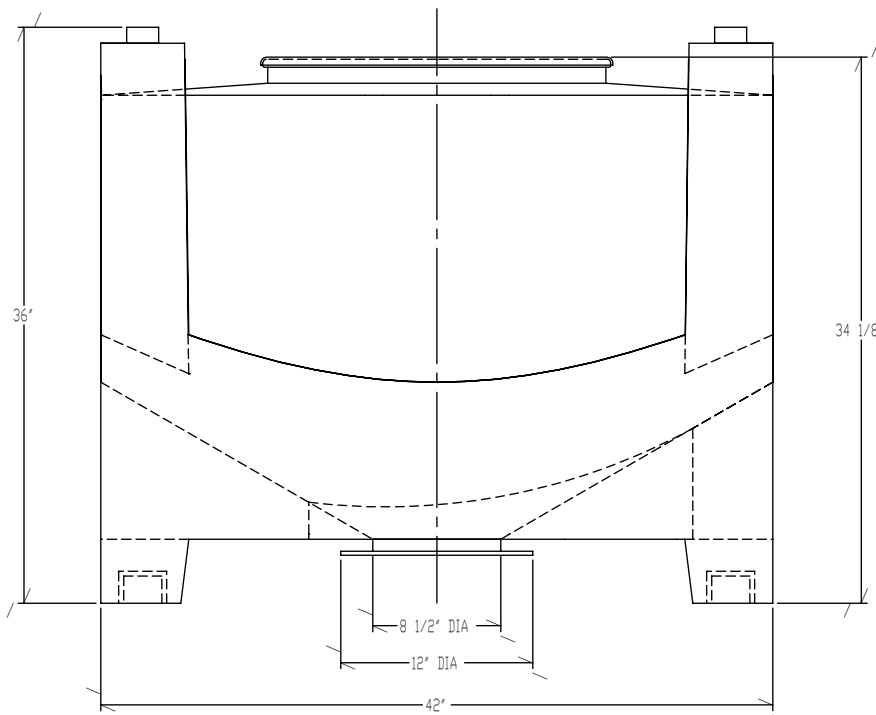


PLAN VIEW



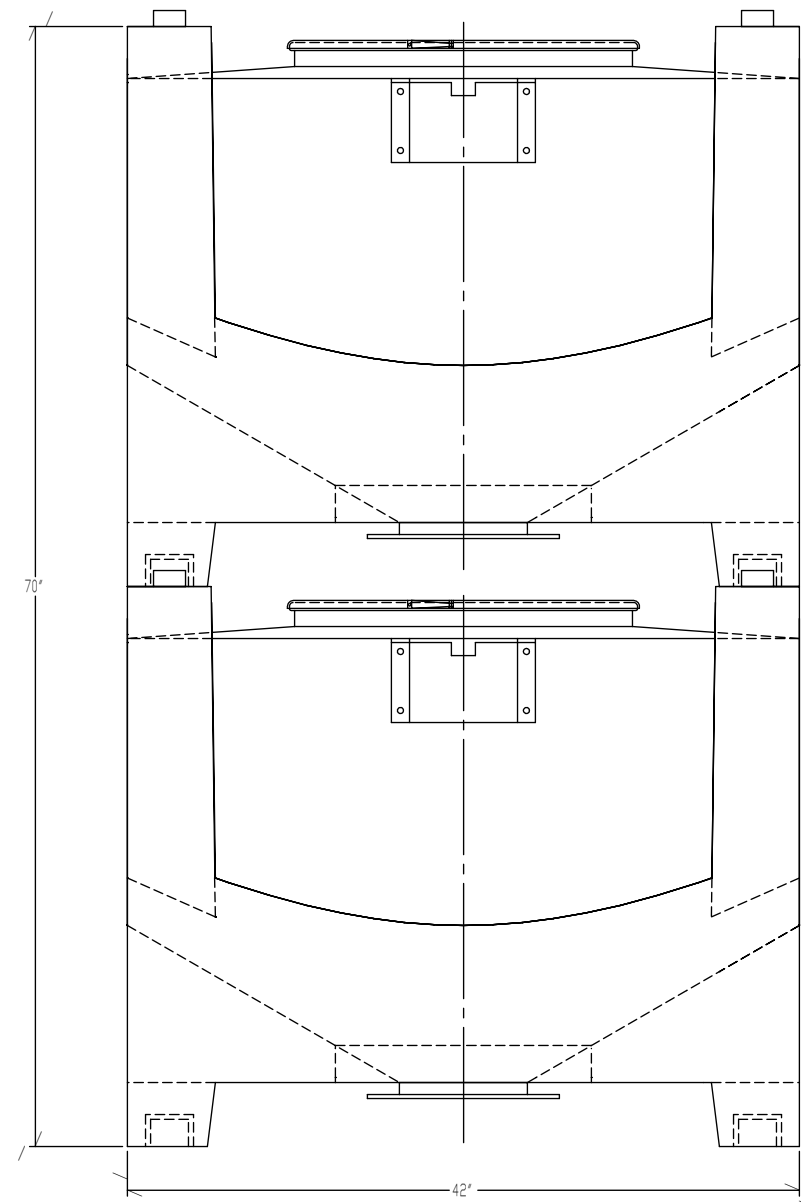
FRONT ELEVATION



SIDE ELEVATION

NOTES:

1. DO NOT SCALE DRAWING.
2. DRAWING SHOWS FINISHED MOLDED PARTS - TRIMMED. SHOWN ARE HOPPER, BASE, AND 2 1/2" DIAMETER LEVER-LOCK LID.
3. ALL DIMENSIONS ARE REFERENCED TO THEORETICAL SHARP CORNERS ON OUTSIDE SURFACE OF MOLDED PART, UNLESS OTHERWISE STATED.
4. UNLESS STATED OTHERWISE, ALL CORNERS WILL HAVE RADII.
5. WALL THICKNESS SHOWN FOR REPRESENTATION ONLY.



TWO ASSEMBLIES,
STACKED

TOLERANCES		REVISIONS			REMCON PLASTICS INC.		
EXCEPT AS NOTED	NO.	DATE	BY	TITLE	DRAWN BY	DATE	SHEET NO.
DECIMAL	1	07/06/92	PFE	RH-19 HOPPER & BASE WITH LEVER-LOCK LID	PFE	02/04/92	1
"	2						
FRACTIONAL	3						
"	4						
ANGULAR	5						
"							

SCALE 1:6 INDEX NO. 01045 DRAWING NO. D-10181