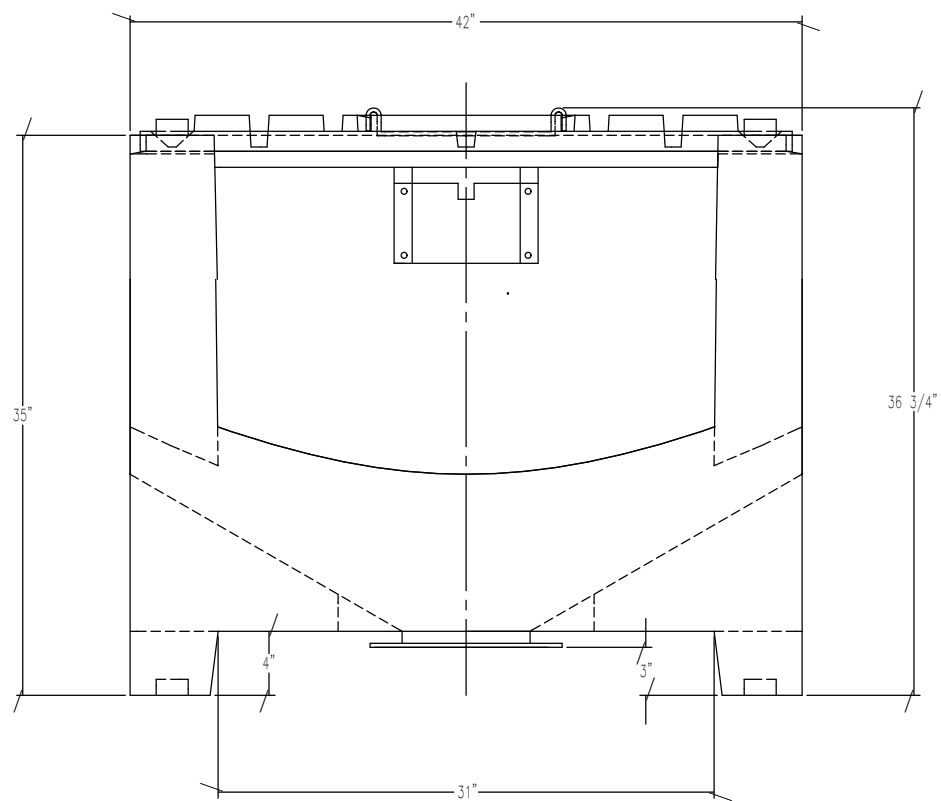


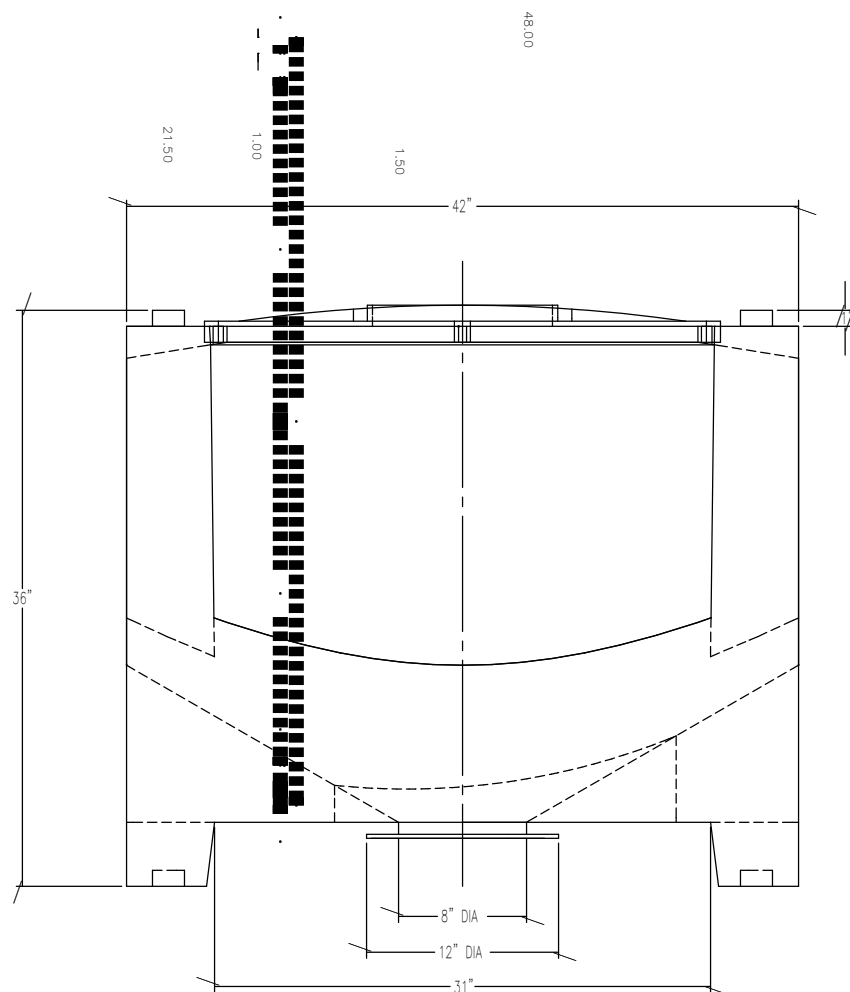
PLAN VIEW

NOTES:

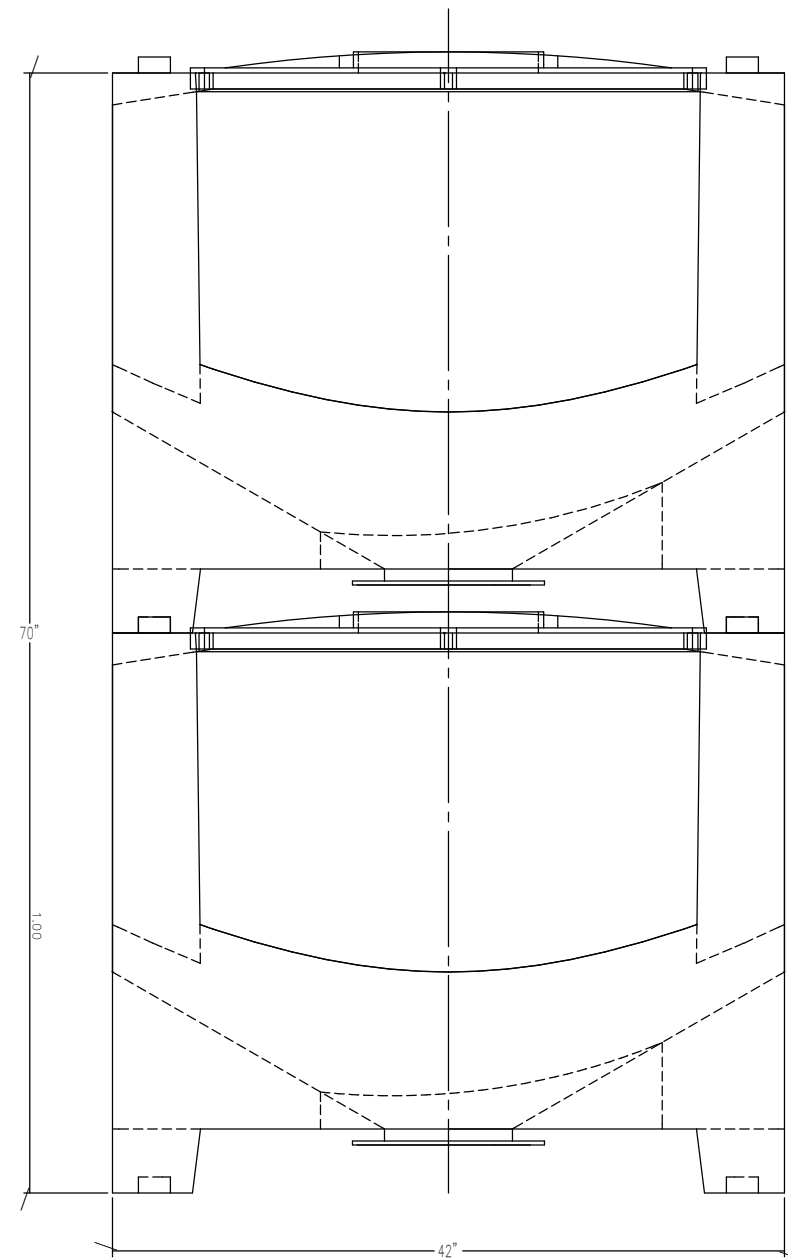
1. SCALE FOR QUOTE/ESTIMATING PURPOSES ONLY.
2. DRAWING SHOWS FINISHED MOLDED HOPPER, BASE, SECURITY TOP, AND FILL PORT COVER - TRIMMED AND ASSEMBLED.
3. ALL DIMENSIONS ARE REFERENCED TO THEORETICAL SHARP CORNERS ON OUTSIDE SURFACE OF MOLDED PART, UNLESS OTHERWISE STATED.
4. UNLESS STATED OTHERWISE, ALL CORNERS WILL HAVE RADI.
5. WALL THICKNESS WHERE SHOWN, FOR REPRESENTATION ONLY.



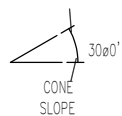
FRONT ELEVATION



SIDE ELEVATION



TWO STACKED ASSEMBLIES



30°
CONE SLOPE

TOLERANCES	REVISIONS			REMCON PLASTICS INC.	
	EXCEPT AS NOTED	NO.	DATE	BY	TITLE
DECIMAL	±	1			RH-19 WITH SECURITY TOP GENERAL SPECIFICATIONS
±	2				
FRACTIONAL	±	3			DRAWN BY PFE DATE 07/15/92 SHEET OF 1
±	4				DRAWING NO.
ANGULAR	±	5			SCALE 1:6 INDEX NO. 01045 DRAWING NO. D-10212
±					