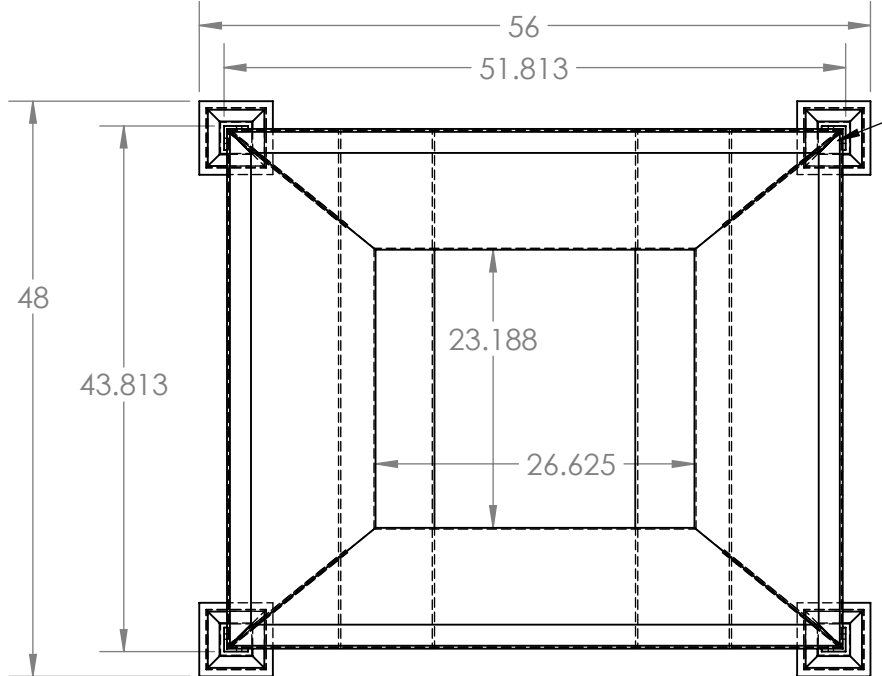
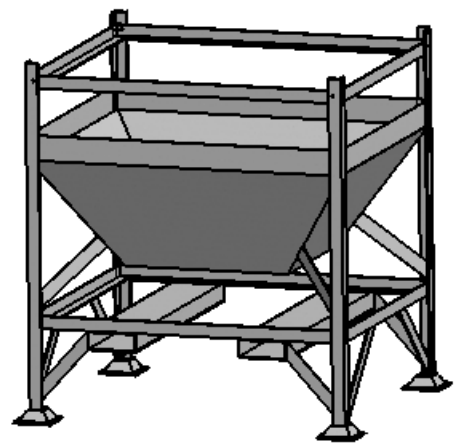


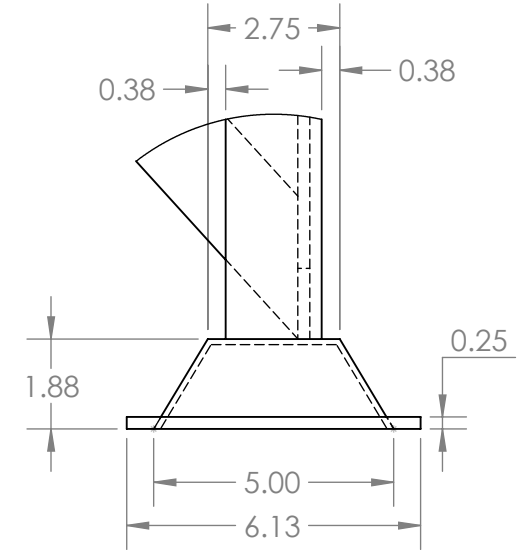
8 7 6 5 4 3 2 1



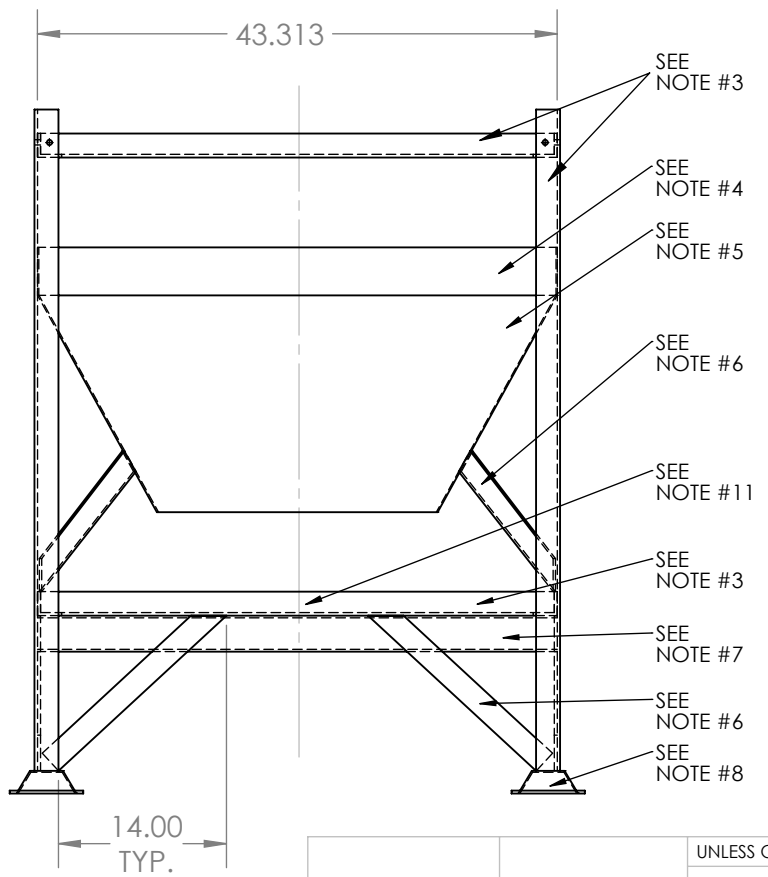
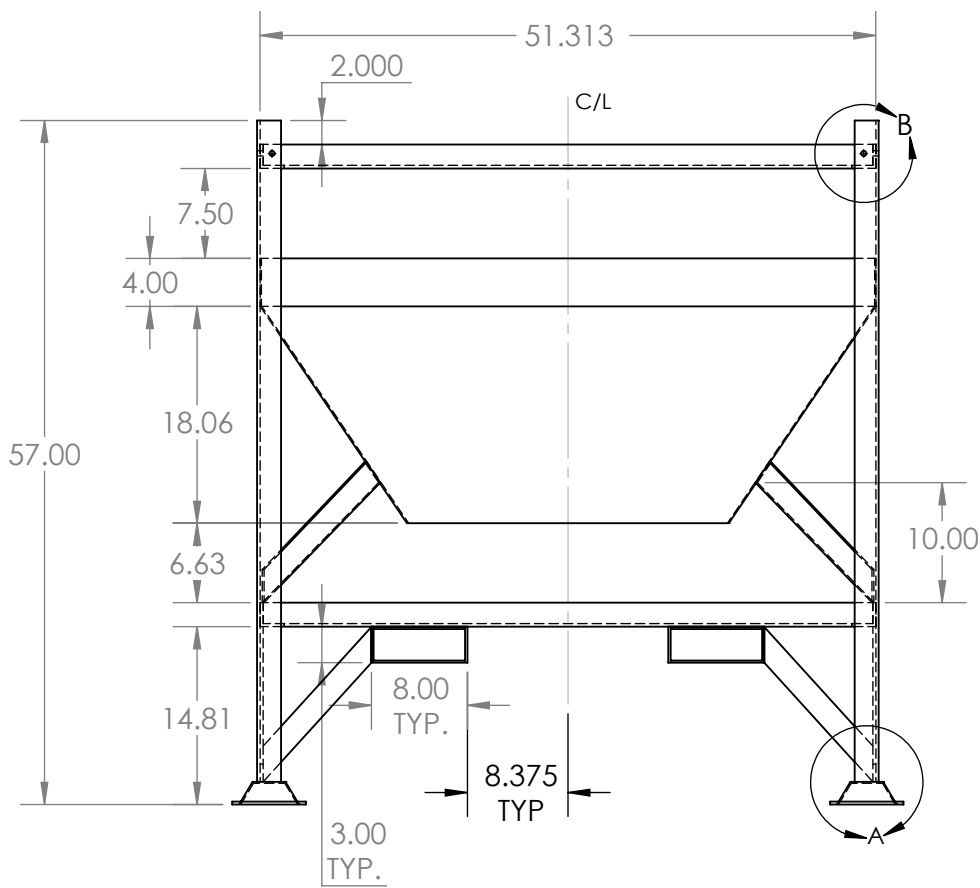
NOTE: TOP FRAME MEMBERS TO BE CUT AT 45 DEGREE ANGLE OR NOTCHED FOR FLUSH FIT. MEMBERS **MAY NOT** OVERLAP



ISOMETRIC SKETCH (NOT TO SCALE)

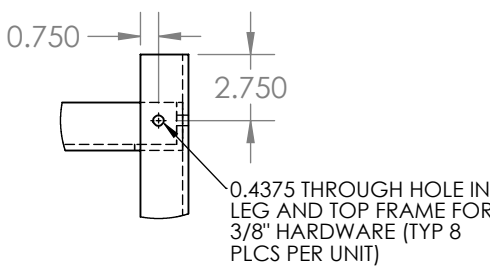


DETAIL A SCALE 1 : 4



NOTES:

- DRAWING SHOWS COMPLETED STEEL FRAME (ALL WELDED CONSTRUCTION, EXCEPT TOP FRAME MEMBERS)
- MATERIAL TO BE H.R.S. A-36 CARBON STEEL OR EQUIVALENT
- BASIC FRAME FROM 2"x2"x1/4" ANGLE
- SIDE STRAPS (4) FROM 4" WIDE 12 GAUGE SHEET OR PLATE
- TRUNCATED SECTION FROM 12 GAUGE PLATE
- SUPPORT GUSSETS FROM 2"x1/4" FLAT BAR
- FORKLIFT CHANNELS FROM 3"x8"x3/16" BOX TUBING OR EQUIVALENT
- LEG STACKING TARGETS (4 PER FRAME) TO BE 5" SQUARE X 1 7/8" WITH 2 3/4" SQUARE TOPS STYLE #2452 FROM LIVONIA TOOL CO. STAND LEGS MOUNTED SQUARE ON TOP FLATS. 1/4" PAD AROUND BOTTOM FOR ADDITIONAL SUPPORT AND PROTECTION FROM SHARP EDGES.
- TOP FRAME MEMBERS MOUNTED WITH 3/8" S/S HARDWARE. 1 BOLT, 1 LOCK WASHER, 2 FLAT WASHERS, AND ONE NUT AT EACH LOCATION (8 PER UNIT)
- FINISHED FRAME TO RECEIVE SHOP COAT PRIME AND SINGLE COAT FINISH COLOR (TO BE SPECIFIED WITH ORDER)
- STENCIL LEFT AND RIGHT SIDE MEMBERS, CENTERED, W/ 1.5" LETTERING TO READ "NO FORKS THIS WAY"



DETAIL B SCALE 1 : 8

PROPRIETARY AND CONFIDENTIAL
 THE INFORMATION CONTAINED IN THIS DRAWING IS THE SOLE PROPERTY OF REMCON PLASTICS INC. ANY REPRODUCTION IN PART OR AS A WHOLE WITHOUT THE WRITTEN PERMISSION OF REMCON PLASTICS INC IS PROHIBITED.

UNLESS OTHERWISE SPECIFIED:		NAME	DATE	Remcon Plastics Inc. 208 Chestnut Street, Reading Pa, 19602	
DIMENSIONS ARE IN INCHES		DRAWN	PFE	7/12/12	TITLE: RM-1340 HOPPER STAND STYLE-01 57"
TOLERANCES:		CHECKED	PFE	7/12/12	
FRACTIONAL: N/A		ENG APPR.	KM	7/12/12	
ANGULAR: ±1/2 DEG		COMMENTS:		SIZE	DWG. NO.
TWO PLACE DECIMAL ±.093 in		THIS DRAWING REPLACES AND SUPERCEDES REMCON DRAWING D-10109 REV 4.		B	052401340003000
THREE PLACE DECIMAL ±.063 in				REV	A
PROJECT NUMBER: PROPRIETARY UPDATES				SCALE: 1:16 WEIGHT: SHEET 1 OF 1	
MATERIAL SEE NOTES					
FINISH SEE NOTES					
NEXT ASSY	USED ON				
APPLICATION		DO NOT SCALE DRAWING			

8 7 6 5 4 3 2 1