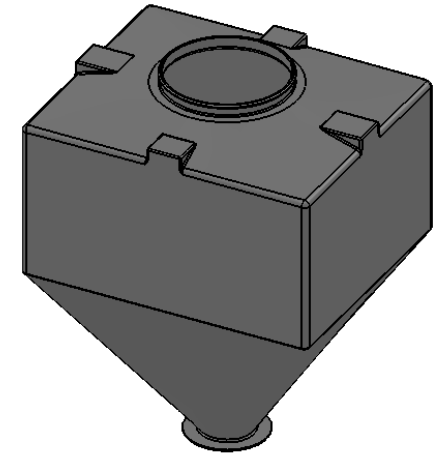
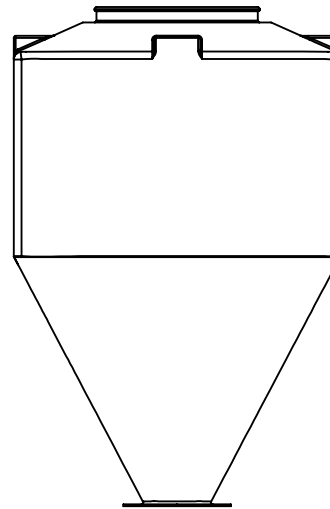
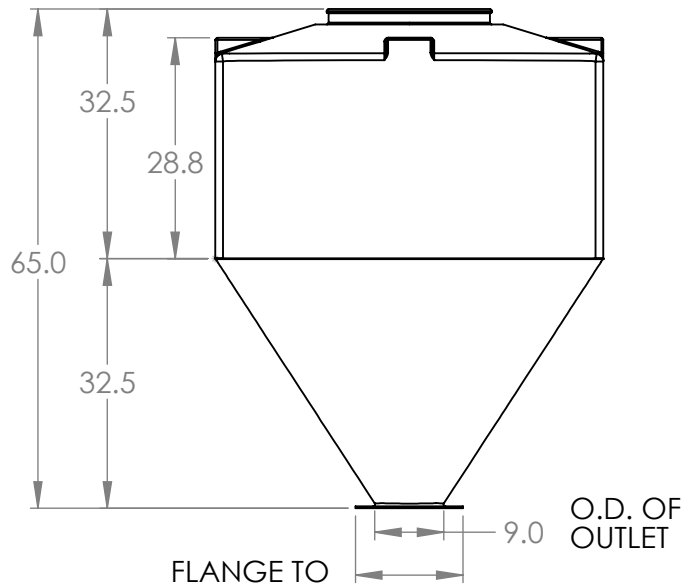


- NOTES:
1. DRAWING SHOWS FINISHED MOLDED PART, TRIMMED
 2. FLANGE TRIM FOR REPRESENTATION ONLY
 3. FLANGE AND VALVE OPTIONS PER ORDER



ISOMETRIC SKETCH



PROPRIETARY AND CONFIDENTIAL
THE INFORMATION CONTAINED IN THIS DRAWING IS THE SOLE PROPERTY OF REMCON PLASTICS INC. ANY REPRODUCTION IN PART OR AS A WHOLE WITHOUT THE WRITTEN PERMISSION OF REMCON PLASTICS INC. IS STRICTLY PROHIBITED.

		UNLESS OTHERWISE SPECIFIED:		NAME	DATE
		DIMENSIONS ARE IN INCHES	DRAWN	PFE	5/29/15
		TOLERANCES:	CHECKED	PFE	5/29/15
		FRACTIONAL: N/A	ENG APPR.	DH	5/29/15
		ANGULAR: ± 1/2 deg			
		DECIMAL ± 0.010 in/in			
		ENGINEERING PROJECT #:	COMMENTS:		
		PROP. UPDATES			
		MATERIAL			
		LLDPE			
		FINISH			
		SMOOTH			
NEXT ASSY	USED ON				
APPLICATION		DO NOT SCALE DRAWING			

Remcon Plastics Inc. 208 Chestnut Street, Reading Pa, 19602		
TITLE: RM-1350 HOPPER BODY AS-MOLDED GENERAL SPECIFICATIONS		
SIZE	DWG. NO.	REV
A	010402150001850	A
SCALE: 1:25	WEIGHT:	SHEET 1 OF 1