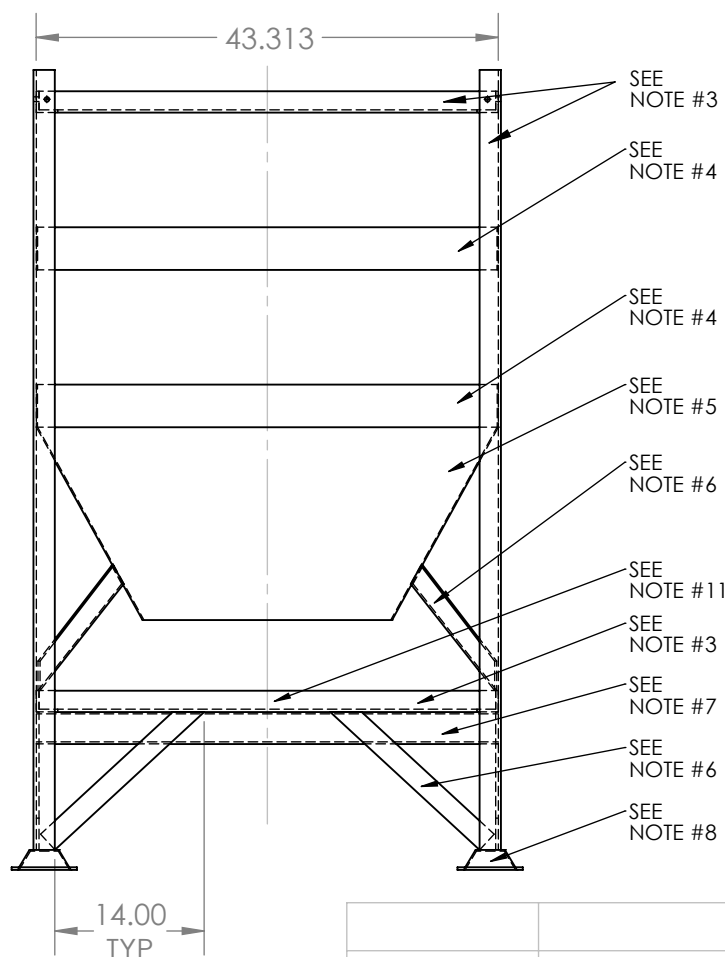
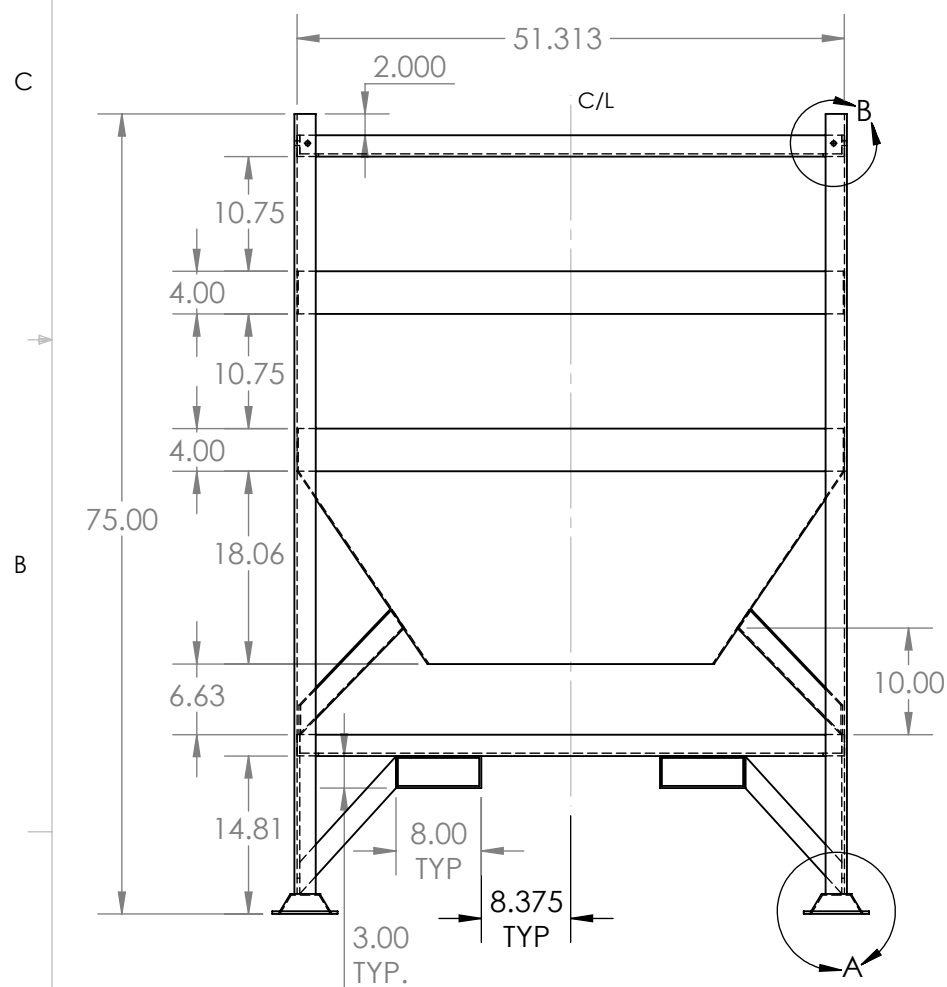
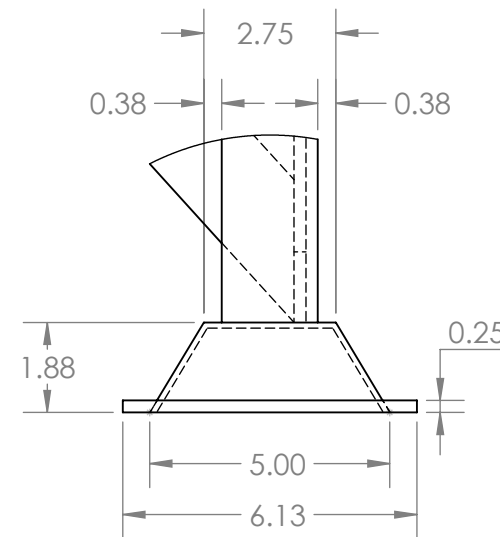
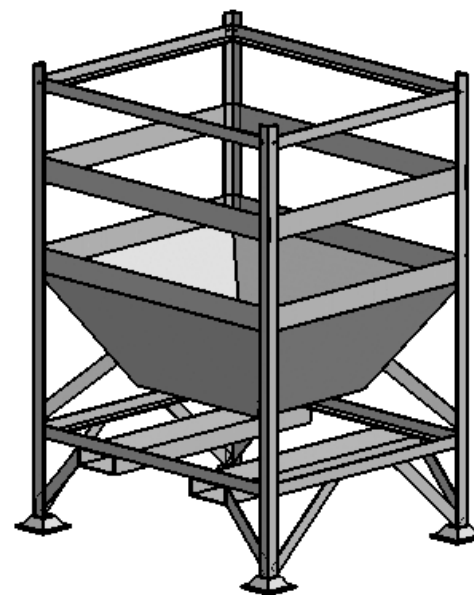
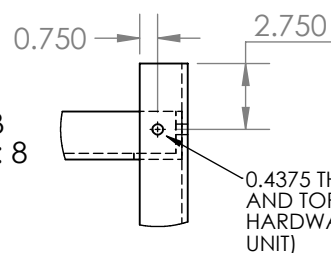


ISOMETRIC SKETCH (NOT TO SCALE)



NOTES:

- DRAWING SHOWS COMPLETED STEEL FRAME (ALL WELDED CONSTRUCTION, EXCEPT TOP FRAME MEMBERS)
- MATERIAL TO BE H.R.S. A-36 CARBON STEEL OR EQUIVALENT
- BASIC FRAME FROM 2"x2"x1/4" ANGLE
- SIDE STRAPS (4) FROM 4" WIDE 12 GAUGE SHEET OR PLATE
- TRUNCATED SECTION FROM 12 GAUGE PLATE
- SUPPORT GUSSETS FROM 2"x1/4" FLAT BAR
- FORKLIFT CHANNELS FROM 3"x8"x3/16" BOX TUBING OR EQUIVALENT
- LEG STACKING TARGETS (4 PER FRAME) TO BE 5" SQUARE X 1 7/8" WITH 2 3/4" SQUARE TOPS STYLE #2452 FROM LIVONIA TOOL CO. STAND LEGS MOUNTED SQUARE ON TOP FLATS. 1/4" PAD AROUND BOTTOM FOR ADDITIONAL SUPPORT AND PROTECTION FROM SHARP EDGES.
- TOP FRAME MEMBERS MOUNTED WITH 3/8" S/S HARDWARE. 1 BOLT, 1 LOCK WASHER, 2 FLAT WASHERS, AND ONE NUT AT EACH LOCATION (8 PER UNIT)
- FINISHED FRAME TO RECEIVE SHOP COAT PRIME AND SINGLE COAT FINISH COLOR (TO BE SPECIFIED WITH ORDER)
- STENCIL LEFT AND RIGHT SIDE MEMEBERS, CENTERED, W/ 1.5" LETTERING TO READ "NO FORKS THIS WAY"



PROPRIETARY AND CONFIDENTIAL
THE INFORMATION CONTAINED IN THIS DRAWING IS THE SOLE PROPERTY OF REMCON PLASTICS INC. ANY REPRODUCTION IN PART OR AS A WHOLE WITHOUT THE WRITTEN PERMISSION OF REMCON PLASTICS INC IS PROHIBITED.

UNLESS OTHERWISE SPECIFIED:		NAME	DATE	Remcon Plastics Inc. 208 Chestnut Street, Reading Pa, 19602	
DIMENSIONS ARE IN INCHES		DRAWN	PFE		7/23/12
TOLERANCES:		CHECKED	PFE		7/23/12
FRACTIONAL: N/A		ENG APPR.	KM	7/23/12	
ANGULAR: ±1/2 DEG		COMMENTS:			
TWO PLACE DECIMAL ±.093 in		THIS DRAWING REPLACES AND SUPERCEDES REMCON DRAWING D-10083 REV 3.			
THREE PLACE DECIMAL ±.063 in		SIZE DWG. NO. REV			
PROJECT NUMBER: PROPRIETARY UPDATES		B 052401350005000 A			
MATERIAL SEE NOTES		SCALE: 1:18 WEIGHT: SHEET 1 OF 1			
FINISH SEE NOTES		DO NOT SCALE DRAWING			
NEXT ASSY	USED ON				
APPLICATION					