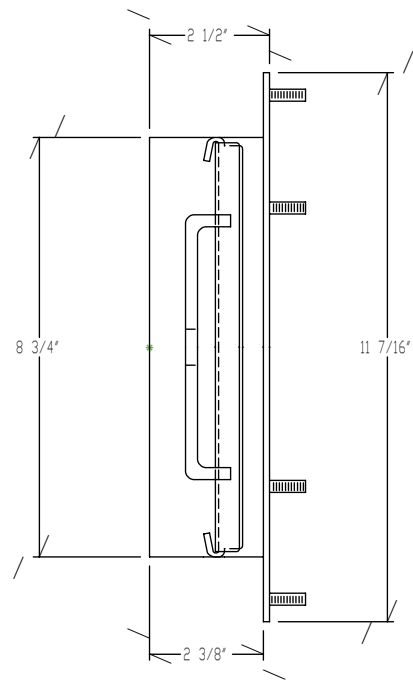
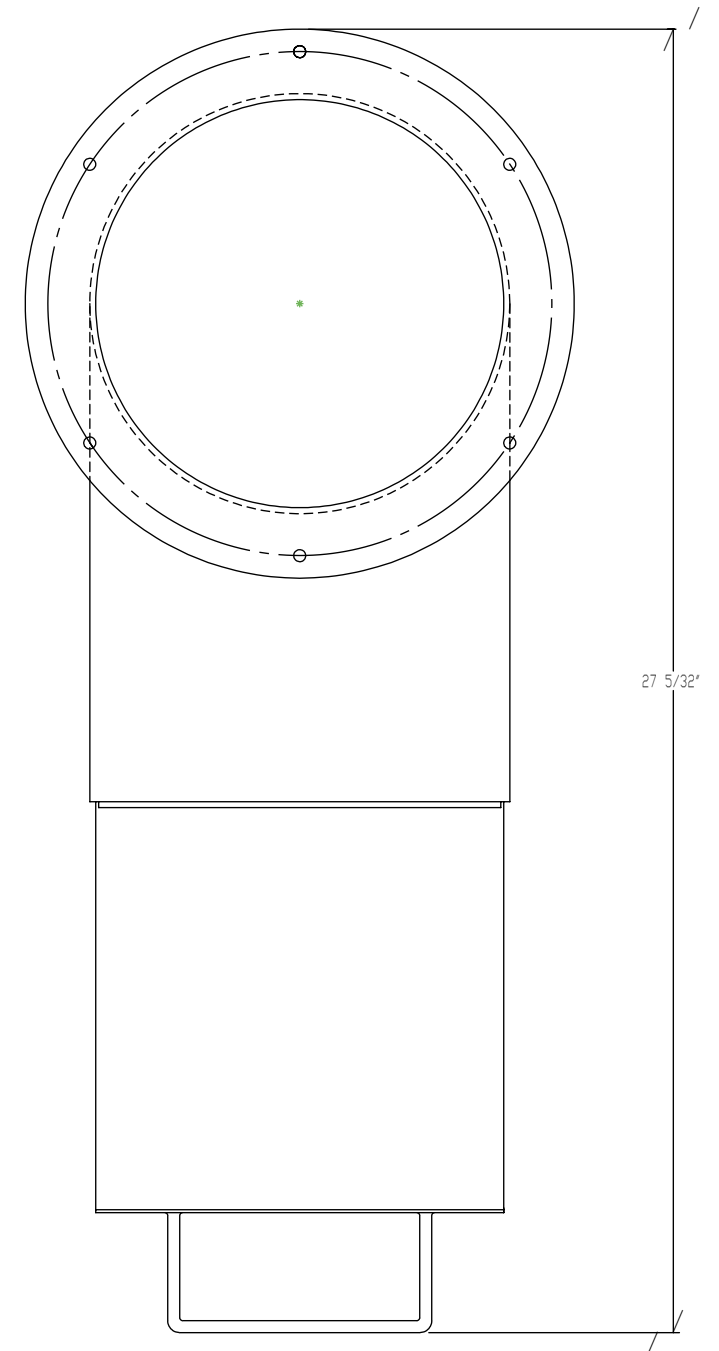


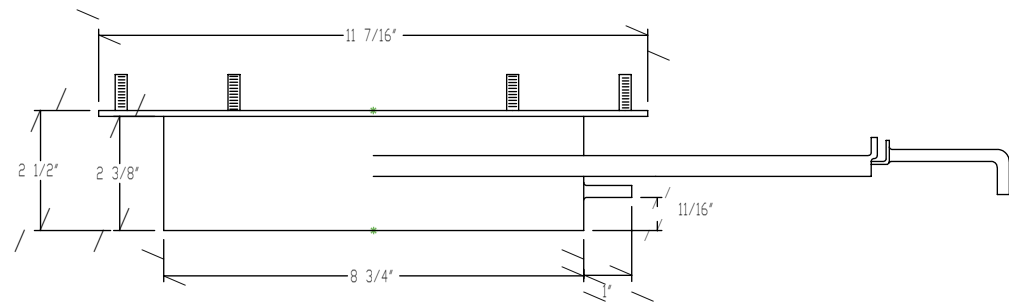
PLAN VIEW



END VIEW



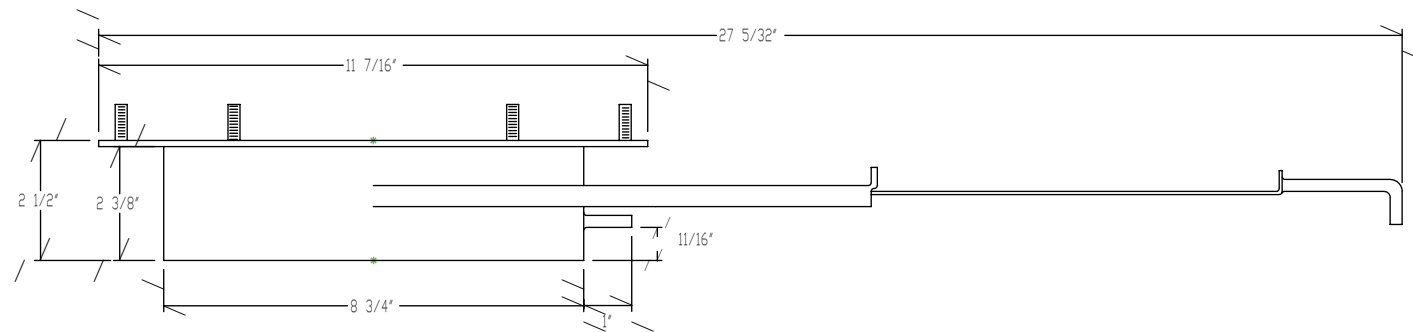
PLAN VIEW
OPEN POSITION



ELEVATION

NOTES:

1. DO NOT SCALE DRAWING.
2. DRAWING SHOWS EXISTING STAINLESS STEEL VALVE.
3. MANUFACTURING TOLERANCES UNKNOWN.
4. SPLIT BACKING RING REQUIRED, WITH HOLE PATTERN TO MATCH VALVE STUDS.



ELEVATION
OPEN POSITION

TOLERANCES	REVISIONS			REMCON PLASTICS INC.		
EXCEPT AS NOTED	NO.	DATE	BY	TITLE		
DECIMAL	1			HOPPER VALVE		
± UNKNOWN	2			DRAWN BY		
FRACTIONAL	3			PFE	DATE	SHEET
± UNKNOWN	4				11/09/90	OF 1
ANGULAR	5			SCALE	CHK'D	DRAWING NO.
± UNKNOWN				1:2		D-10084