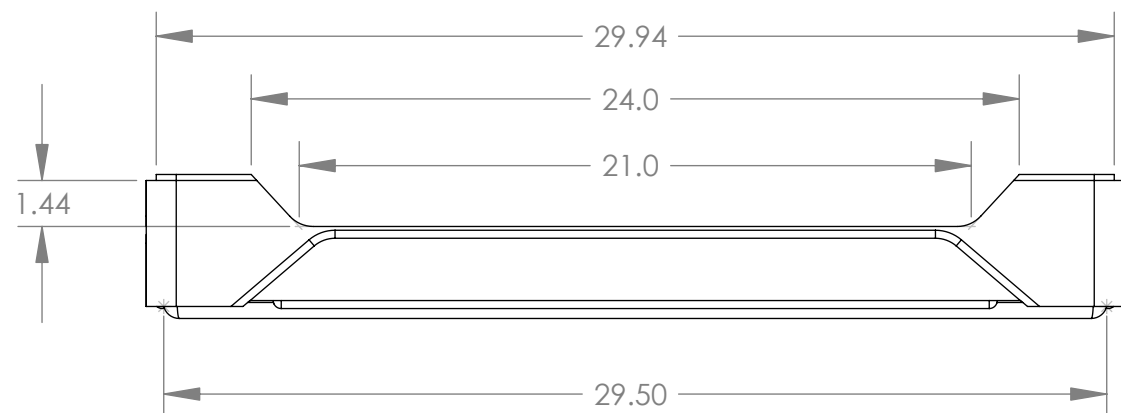
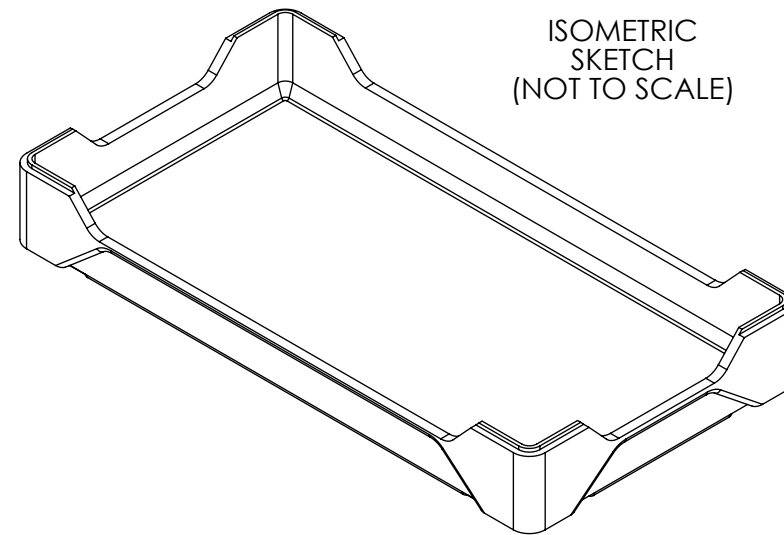
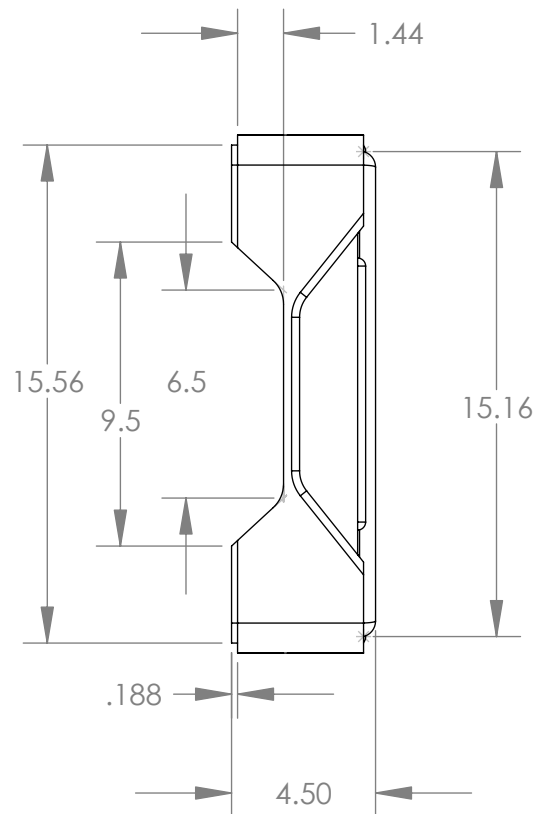
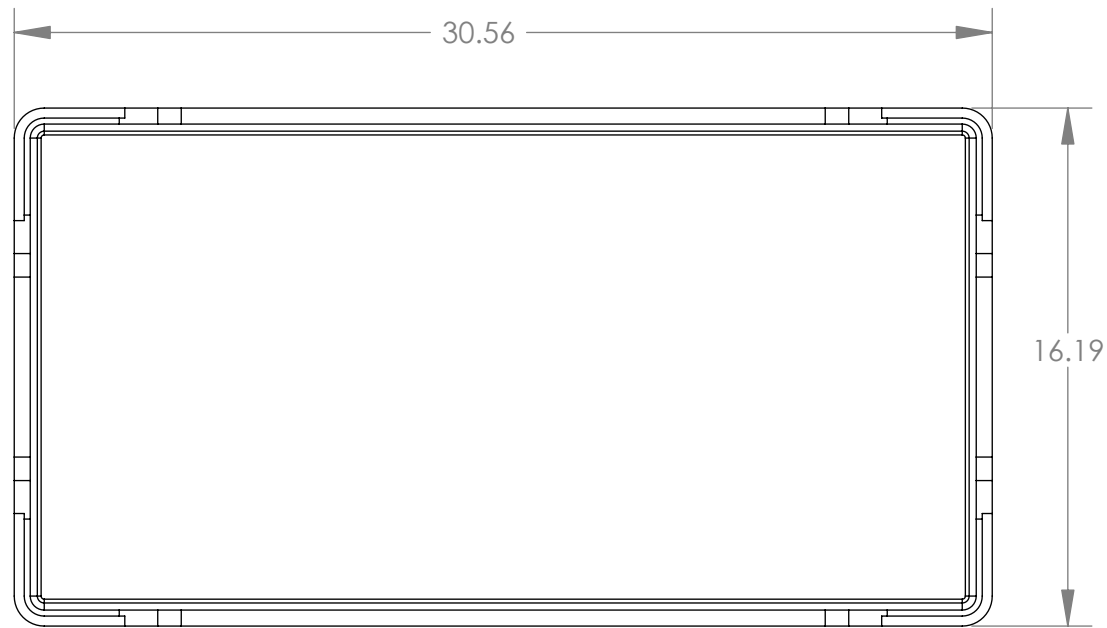


8 7 6 5 4 3 2 1



NOTES:

1. DRAWING SHOWS FINISHED MOLDED TRAY W/ SOLID BOTTOM
2. "XXX" ON END OF DRAWING / PART NO. DENOTES COLOR CODE
3. ALL MATERIALS TO BE FDA COMPLIANT
4. ALL DIMENSIONS ARE TO THEORETICAL SHARP CORNERS
5. CERTAIN LOGICAL HIDDEN LINES AND RADII OMITTED FOR CLARITY
6. ALL EDGES, PARTING LINES AND TRIMMED AREAS TO BE FREE OF FLASH
7. GATE TO BE TRIMMED FLUSH TO 0.032 BELOW SURFACE
8. PARTS TO BE FREE AND CLEAR OF DIRT AND DEBRIS

PROPRIETARY AND CONFIDENTIAL
 THE INFORMATION CONTAINED IN THIS DRAWING IS THE SOLE PROPERTY OF REMCON PLASTICS INC. ANY REPRODUCTION IN PART OR AS A WHOLE WITHOUT THE WRITTEN PERMISSION OF REMCON PLASTICS INC IS PROHIBITED.

		UNLESS OTHERWISE SPECIFIED:		NAME	DATE	Remcon Plastics Inc. 208 Chestnut Street, Reading Pa, 19602	
		DIMENSIONS ARE IN INCHES TOLERANCES: FRACTIONAL: N/A ANGULAR: ±1/2DEG TWO PLACE DECIMAL: ±.045 THREE PLACE DECIMAL: ±.010		DRAWN	PFE	3/9/07	TITLE: 30 X 16 X 4.5 REMCON CANDY TRAY SOLID BOTTOM VERSION GENERAL SPECIFICATIONS
				CHECKED	PFE	3/9/07	
				ENG APPR.	KM	3/9/07	
				MFG APPR.			
		PROJECT NUMBER: 366/1722		Q.A.			SIZE DWG. NO. REV B 511103016001XXX A
NEXT ASSY		USED ON		COMMENTS:			
		MATERIAL POLYPROPYLENE				SCALE: 1:6 WEIGHT: 6.23# SHEET 1 OF 1	
		FINISH SMOOTH					
APPLICATION		DO NOT SCALE DRAWING					

8 7 6 5 4 3 2 1