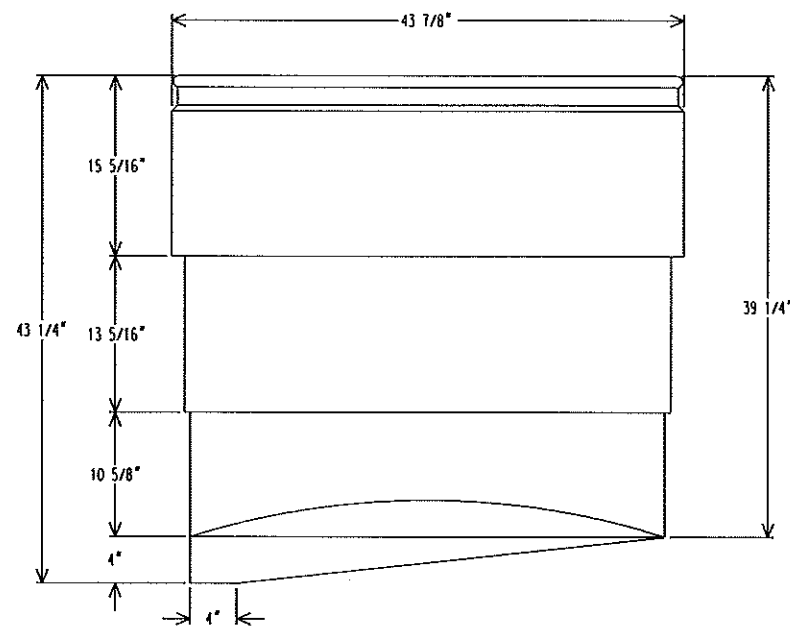
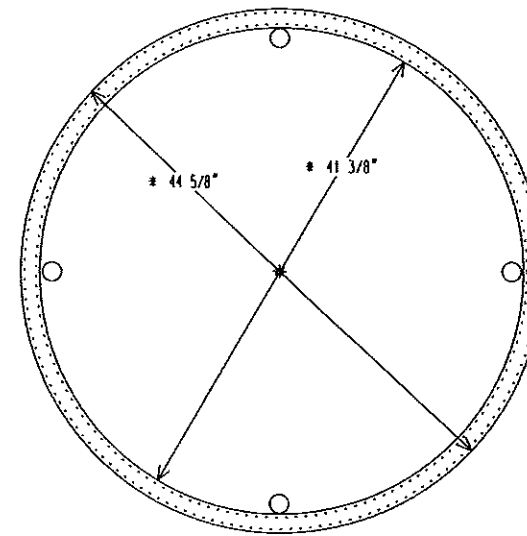


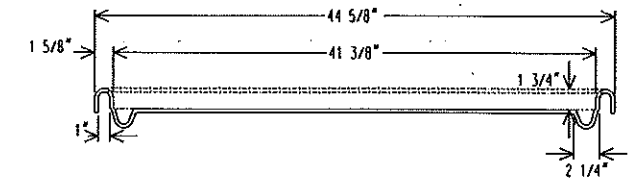
FRONT ELEVATION



SIDE ELEVATION

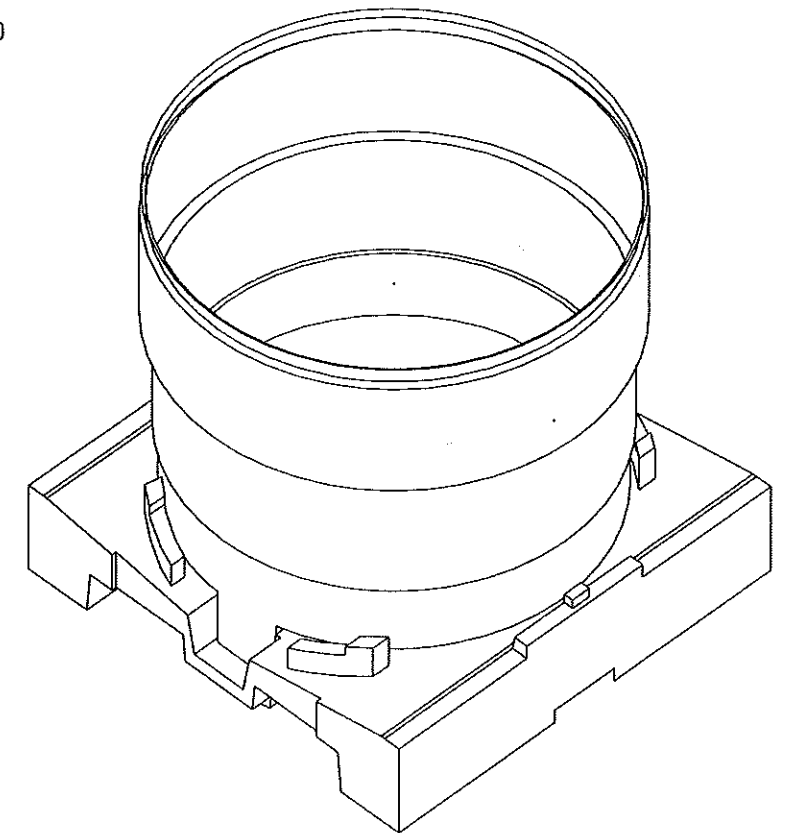


PLAN VIEW OF LID

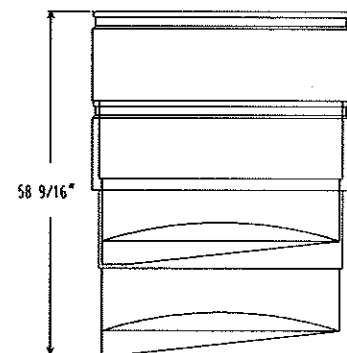


SECTION PROFILE OF LID

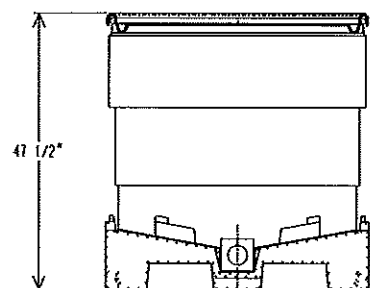
AGREEMENT TO MAINTAIN CONFIDENTIALITY
 This drawing is owned by REMCON PLASTICS INC. and shall be returned upon demand. It is loaned on condition that it shall not be copied or reproduced or submitted to others without the Owner's consent. In accepting it subject to this condition the recipient further agrees that this drawing or any design, detail or concept disclosed herein shall not be used in any way detrimental to or in competition with the Owner.



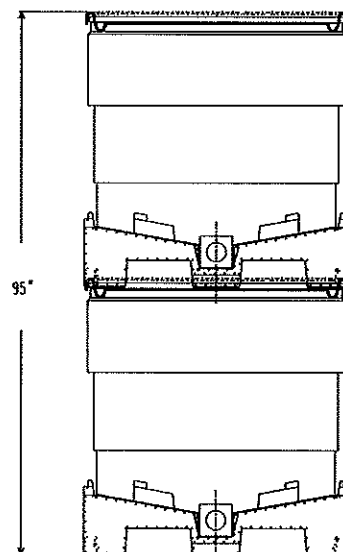
3-D VIEW



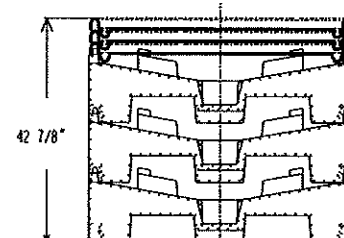
STACKED BINS



SINGLE COMPLETE UNIT



STACKED FULL UNITS



STACKED PALLET AND LIDS

COMPOSITE SKETCHES
(NOT TO SCALE)

NOTES:

- DO NOT SCALE DRAWING.
- DRAWING SHOWS FINISHED MOLDED BIN AND LID, TRIMMED.
- FOR ADDITIONAL INFORMATION AND PALLET BASE DETAILS, REFER TO THE FOLLOWING REMCON DRAWINGS:
 D-10103
 D-10104
 D-10106
- ALL CORNERS REQUIRE RADIUS - 1/16" MIN AND 1/4" MAX UNLESS STATED OTHERWISE.
- ALL DIMENSIONS ARE TO THEORETICAL SHARP CORNERS ON OUTSIDE SURFACE OF MOLDED PART UNLESS STATED OTHERWISE.

TOLERANCES		REVISIONS			REMCON PLASTICS INC.		
EXCEPT AS NOTED	NO.	DATE	BY	TITLE	DATE	SCALE	SHEET 1 OF 1
	1	3/12/91	PFE	ASEPTIC BIN - 220 G WITH LID AND PALLET BASE	2/18/91	1:8	DRAWING NO. D-10107
ACTUAL	2	7/16/92	PFE				
FUNCTIONAL	3	09/27/94	PFE				
DRAWN BY	4			PFE			
CHECKED BY	5						