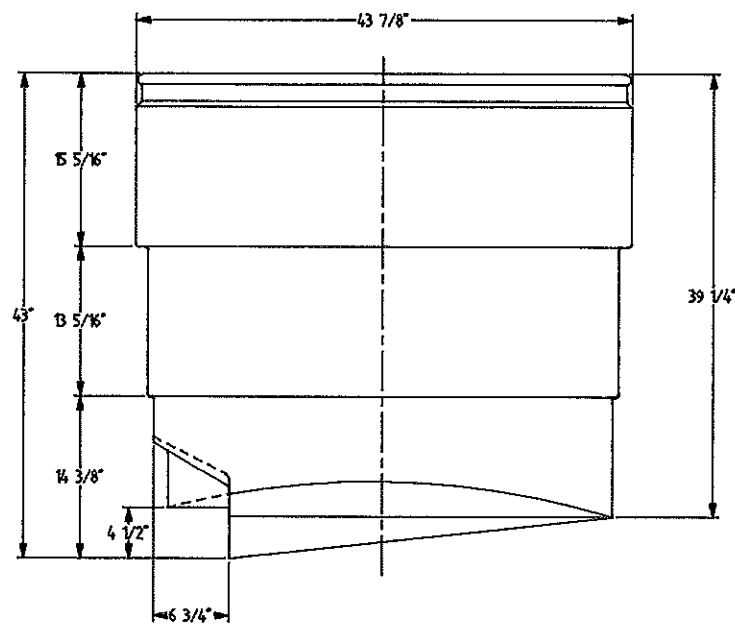
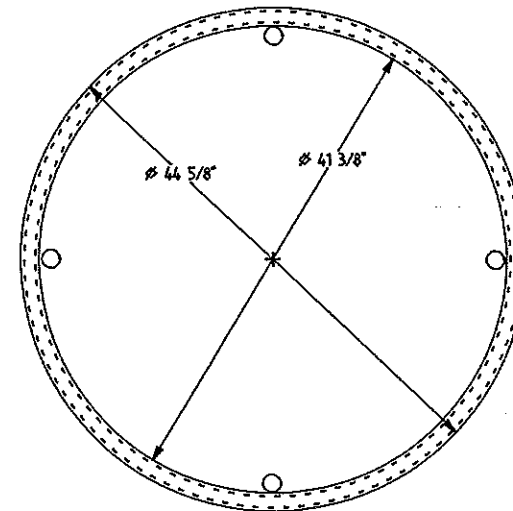


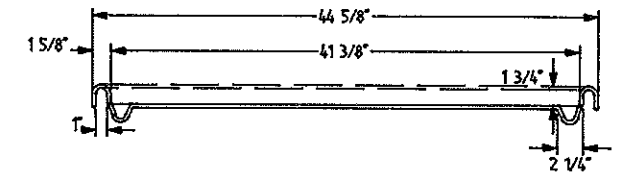
FRONT ELEVATION



SIDE ELEVATION

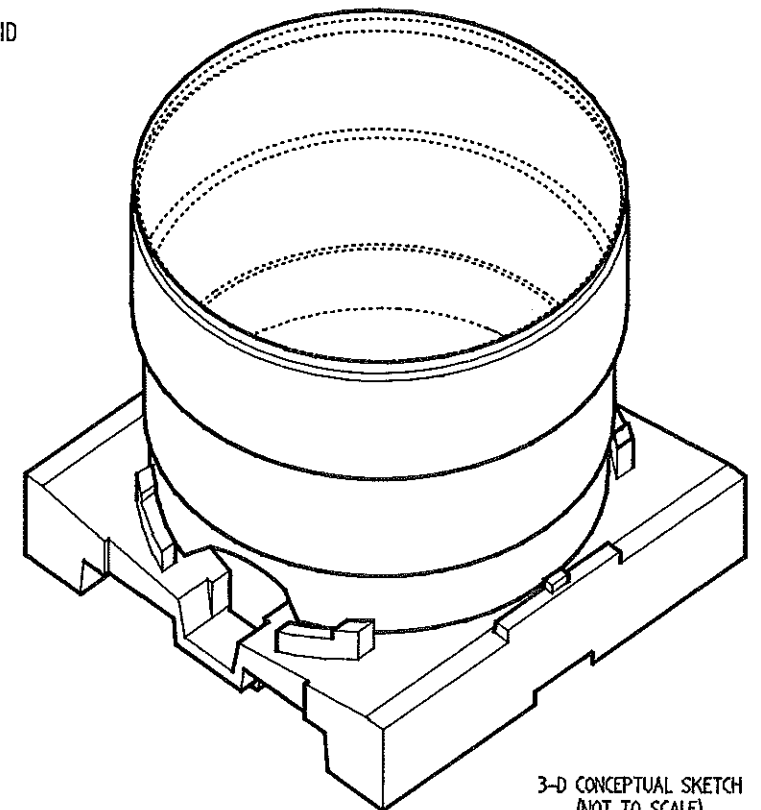


PLAN VIEW OF LID

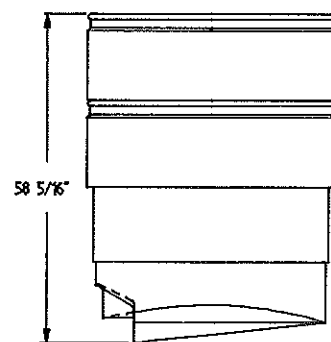


SECTION PROFILE OF LID

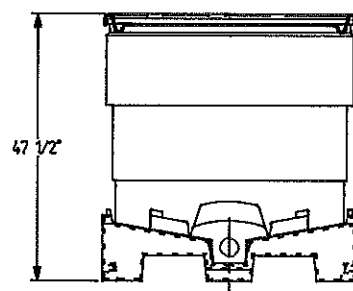
AGREEMENT TO MAINTAIN CONFIDENTIALITY
 This drawing is owned by REMCON PLASTICS INC. and shall be returned upon demand. It is loaned on condition that it shall not be copied or reproduced or submitted to others without the Owner's consent. In accepting it subject to this condition the recipient further agrees that this drawing or any design, detail or concept disclosed herein shall not be used in any way detrimental to or in competition with the Owner.



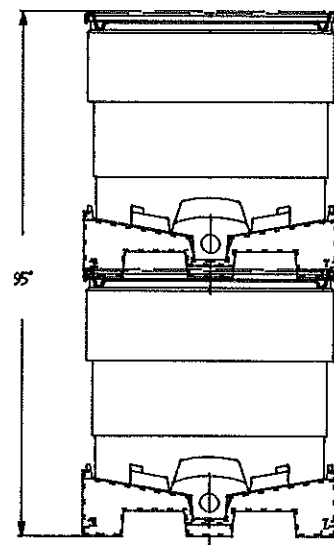
3-D CONCEPTUAL SKETCH (NOT TO SCALE)



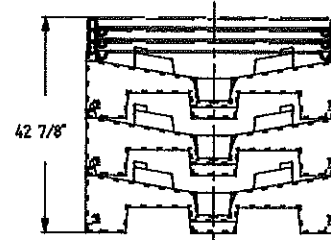
STACKED BINS



SINGLE COMPLETE UNIT



STACKED FULL UNITS



STACKED PALLETS AND LIDS

COMPOSITE SKETCHES (NOT TO SCALE)

NOTES:

- DO NOT SCALE DRAWING.
- DRAWING SHOWS FINISHED MOLDED PARTS, TRIMMED.
- FOR ADDITIONAL INFORMATION AND PALLET BASE DETAILS, REFER TO THE FOLLOWING REMCON DRAWINGS:
 D-10103
 D-10104
 D-10106
- ALL CORNERS REQUIRE RADI - 1/16" MIN AND 1/4" MAX UNLESS STATED OTHERWISE.
- ALL DIMENSIONS ARE TO THEORETICAL SHARP CORNERS ON OUTSIDE SURFACE OF MOLDED PARTS UNLESS STATED OTHERWISE.

TOLERANCES		REVISIONS			REMCON PLASTICS INC.		
EXCEPT AS NOTED	NO.	DATE	BY	TITLE	DATE	SHEET 1 OF 1	
DECIMAL ± SR.MT.	1			ASEPTIC BIN STY-02 - 220 G WITH LID AND PALLET BASE	09/27/94	DRAWING NO.	
FRACTIONAL ± SR.MT.	2						
ANGULAR ± SR.MT.	3						
	4						
	5						
		SCALE 1:1	INDEX NO. 01256			D-10363	