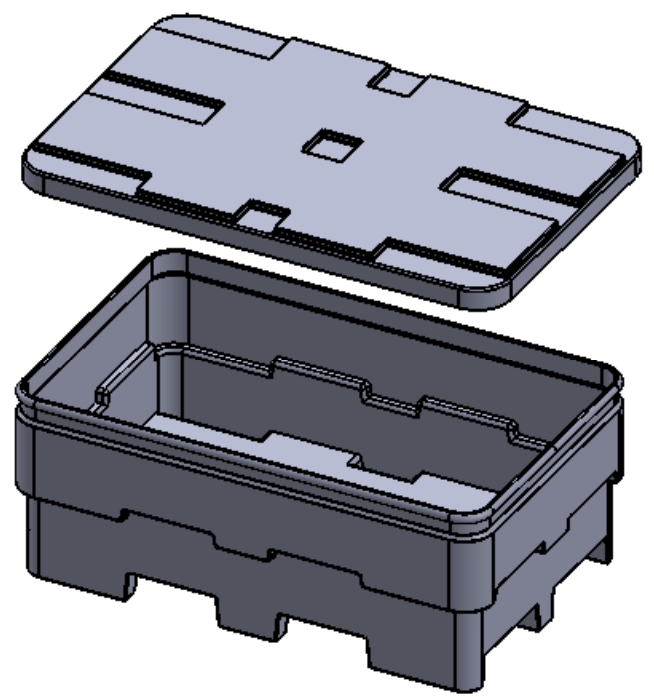
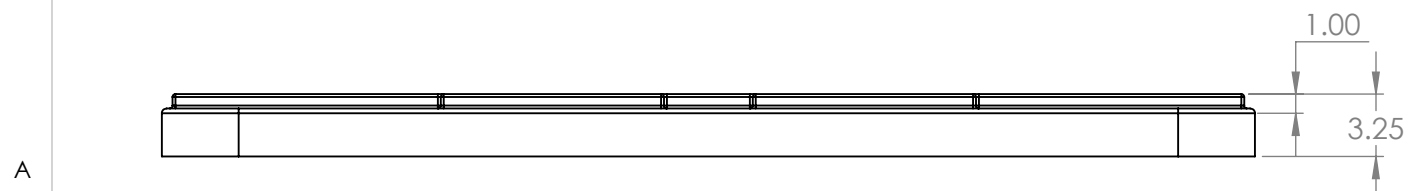


- NOTES:
1. DRAWING SHOWS FINISHED MOLDED PARTS, TRIMMED
 2. ALL CORNERS AND EDGES HAVE RADII
 3. CONSULT INDIVIDUAL PART GEOMETRY FOR DETAILS AND DIMENSIONS NOT SHOWN.



ISOMETRIC SKETCHES
(NOT TO SCALE)



PROPRIETARY AND CONFIDENTIAL
THE INFORMATION CONTAINED IN THIS DRAWING IS THE SOLE PROPERTY OF REMCON PLASTICS INC. ANY REPRODUCTION IN PART OR AS A WHOLE WITHOUT THE WRITTEN PERMISSION OF REMCON PLASTICS INC IS PROHIBITED.

		UNLESS OTHERWISE SPECIFIED:		NAME	DATE	Remcon Plastics Inc. 208 Chestnut Street, Reading Pa, 19602		
		DIMENSIONS ARE IN INCHES TOLERANCES: FRACTIONAL: N/A ANGULAR: ±1/2 DEG DECIMAL: ±0.010 in/in		DRAWN	PFE	9/25/15	TITLE:	
		PROJECT NUMBER: PROP. UPDATES		CHECKED	PFE	9/25/15	NL-22 BIN & LID GENERAL SPECIFICATIONS	
		MATERIAL LLDPE		ENG APPR.	DGH	9/25/15		
NEXT ASSY	USED ON	FINISH SMOOTH		COMMENTS:		SIZE	DWG. NO.	REV
APPLICATION		DO NOT SCALE DRAWING				B	013602256001XXX	0
						SCALE: 1:10 WEIGHT:		SHEET 1 OF 1