

WALL MOUNT LOCKER ASSEMBLY

REMCON
PLASTICS, INCORPORATED

All-American Durability

208 Chestnut St,
Reading, PA 19602
(610)376-2666

Locker Assembly

Wall Mount: locker Installation



Introduction:

Before beginning, check to ensure the floor is level, and the wall is flat. If you are mounting on a cement wall, check for excess mortar and any holes in the wall. Please remove any excess mortar and fill any holes prior to assembly.

Materials:	Tools:
Mounting Bars (or M.B.) 1 1/2" x 1/2" (wood, plastic, stainless, aluminum)	Level – 36" or longer
1/2" x #10 self-tapping screws (4 per locker in 12", 18" and 36" – 8 per locker in 60")	Tape measure
#10 stainless washers (quantities as per #10 screws)	Marker / pencil
1/8" x 3/8" stainless or aluminum rivets	#2 Screwdriver or driving bit (for self-tapping screws)
#5 flat washers (to prevent rivet pull-through)	Power drill
	Add 1/4" drill bit for wall anchors (use masonry drill bit if mounting on cement wall)
	Riveting tool



1. Placement of Lower Locker Bank

Choose one of the following:

- ❖ If floor is level, lockers can be placed directly on the ground (the floor will be your baseline)
- ❖ If you choose to install the lockers off the floor surface, measure a gap between the floor and chosen location of the bottom locker. Draw a level line to identify where lockers will be placed (this will be your baseline).

2. Location of Top M.B. (I)

- ❖ Measure 35 $\frac{1}{8}$ " from the baseline you've just determined.
- ❖ Draw a level line across your wall at the 35 $\frac{1}{8}$ " mark from baseline. Width of mounting bar is 48".
- ❖ Hold mounting bar directly below newly drawn line to determine location of wall anchors. Mark a '●' in the center of each hole on the bar.

3. Placement of Top M.B. (I)

- ❖ Insert the wall anchor into the designated spot '●' by tapping with a hammer.
- ❖ Place mounting bar on drawn line and align center hole with center wall anchor.

VISUALS:



TIPS AND TRICKS 

1. For clean-ability reasons, we recommend locating lockers a given amount above the floor.

2. To ensure a straight level line measure from the left, right and center of your baseline up to 35 $\frac{1}{8}$ ".

Use the outer most holes for 12 and 36" lockers. The adjacent hole is for 18, 36XL and 60" locker.

3. If you are drilling into a concrete wall, use a masonry drill bit to insert wall anchors.

4. Attachment of Top M.B. (I)

- ❖ Once mounting bar is aligned with wall anchors, manually screw #10 into center hole.
- ❖ Finish attachment by screwing in the additional holes provided.

5. Location of Lower M.B. (I)

- ❖ Measure down 32 3/8" from the top of the upper mounting bar and draw a line on the wall.
- ❖ Place bar directly under drawn line and place a '●' on the wall in the center hole of bar.

6. Placement of Lower M.B. (I)

- ❖ Pre-drill holes on designated marks '●' and insert the wall anchors with a hammer.
- ❖ Place mounting bar on drawn line and align center hole with center wall anchor.

VISUALS:



TIPS AND TRICKS 

4. For best results, manually attach screw and double check if bar is level.

5. To ensure a straight level line measure from the left, right and center of your baseline up to 32 3/8".

Use the outer most holes for 12 and 36" lockers. The adjacent inner hole is for 18, 36XL and 60" locker.

7. Attachment of Lower M.B. (I)

- ❖ Once mounting bar is aligned with wall anchors, manually screw #10 into center hole.
- ❖ Finish attachment by screwing in the additional holes provided.

8. Preparing Bottom Lockers (I)

- ❖ Take tallest locker and place face-down on the ground.
- ❖ Measure and place a mark '●' 2" across the upper recessed locker channel from left and right.
- ❖ Drill pilot holes on each mark '●' with an 1/8" drill bit.

9. Attachment of Bottom Lockers (I)

- ❖ Position the leftmost locker flush against the mounting bar.
- ❖ With the locker door open, drill into the mounting bar using pre-drilled locations.
- ❖ Place one washer on each screw and lightly fasten the lockers to the mounting bar in the upper and lower channels.
- ❖ Tighten screws once you are certain lockers are level.
- ❖ Repeat this process for all three remaining lockers.

VISUALS:



TIPS AND TRICKS 

8. Position four lockers side by side, we suggest you begin with the tallest locker on the far right.

Remove any extra shavings from the drill holes.

9. Turn drill on slowly to ensure control and prevent stripping.

Begin attachment with the upper mounting bar.

10. Top M.B. Location (II)

- ❖ Position tallest top locker on right side of already installed lower bank.
- ❖ Measure 35 ¼" from the top of each side of the already installed lower locker bank to ensure upper recessed channel aligns with mounting bar location.
- ❖ Draw a level line across your wall connecting the 35 ¼" marks.
- ❖ Hold mounting bar directly below newly drawn line to determine location of wall anchors. Mark a '●' in the center of each hole on the bar.

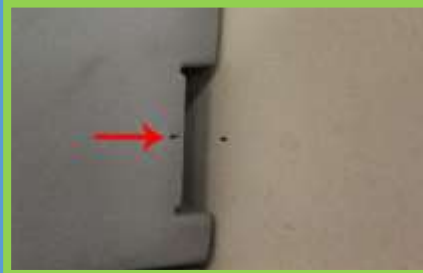
11. Top M.B. Placement (II)

- ❖ Pre-drill holes on designated marks '●' and insert the wall anchors with a hammer.
- ❖ Place mounting bar on drawn line and align center hole with center wall anchor.

12. Top M.B. Attachment (II)

- ❖ Once mounting bar is aligned with wall anchors, manually screw #10 into center hole.
- ❖ Finish attachment by screwing in the additional holes provided.

VISUALS:



TIPS AND TRICKS 

12. For best results, manually attach screw and double check if bar is level.

13. Lower M.B. Location (II)

- ❖ Position tallest top locker on right side of already installed lower bank.
- ❖ Measure down 32 ³/₈" from the top of each side of the already installed upper mounting bar. Ensure lower recessed channel aligns with bottom mounting bar location.
- ❖ Draw a level line across your wall connecting the 32 ³/₈" marks.
- ❖ Hold mounting bar directly below newly drawn line to determine location of wall anchors. Mark a '●' in the center of each hole on the bar.

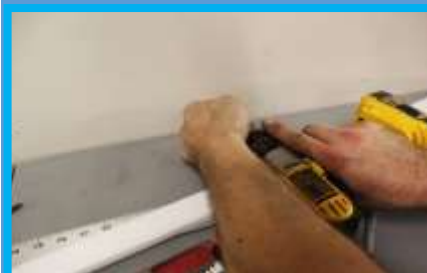
14. Lower M.B. Placement (II)

- ❖ Pre-drill holes on designated marks '●' and insert the wall anchors with a hammer.
- ❖ Place mounting bar on drawn line and align center hole with center wall anchor.

15. Lower M.B. Attachment (II)

- ❖ Once mounting bar is aligned with wall anchors, manually screw #10 into center hole.
- ❖ Finish attachment by screwing in the additional holes provided.

VISUALS:



TIPS AND TRICKS 

15. For best results, manually attach screw and double check if bar is level.

16. Top Locker Preparation (II)

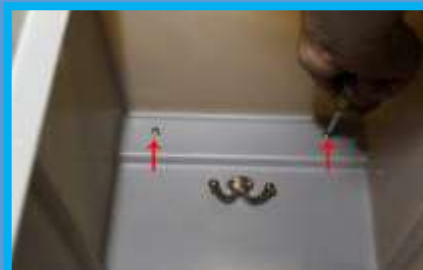
- ❖ Take tallest locker and place face-down on the ground.
- ❖ Measure and place a mark ('•') 2" across the upper recessed locker channel from left and right.
- ❖ Drill pilot holes on each mark ('•') with an 1/8" drill bit.

17. Top Locker Attachment (II)

- ❖ Position the leftmost locker flush against mounting bar and ensure alignment with lower locker bank.
- ❖ With the locker door open, drill into mounting bar using pre-drilled locations.
- ❖ Place one washer on each screw and lightly fasten the lockers to the mounting bar in upper and lower channels.
- ❖ Tighten screws once you are certain lockers are level.
- ❖ Repeat this process for all three remaining lockers.



VISUALS:



TIPS AND TRICKS 

16. Position four lockers side by side, we suggest you begin with the tallest locker on the far right.

Remove any extra shavings from the drill hole location.

17. Turn drill on slowly to ensure control and prevent stripping.

Begin the attachment with the upper mounting bar.

18. Riveting Lockers (OPTIONAL)

- ❖ Once the locker installation is complete, bodies may be joined together from side-to-side as well as top-to-bottom.
- ❖ Pre-drill hole through both lockers you wish to connect. Insert rivet through drilled hole and place washer on opposite side.
- ❖ Use riveting tool to complete connection process.



VISUALS:



TIPS AND
TRICKS 

18. To close any gaps between lockers or for a more aesthetic look, we recommend riveting lockers together.

Finished product

Additional questions can be answered by calling 1-800-360-3636 or visiting our website: www.remcon.com