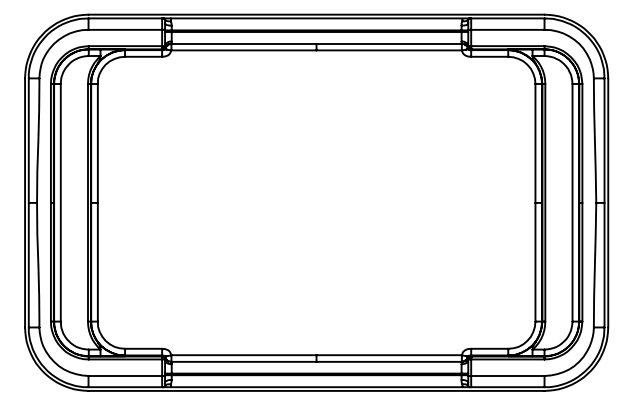
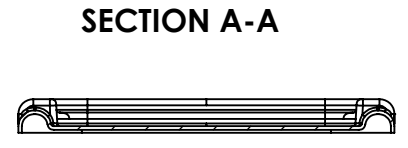
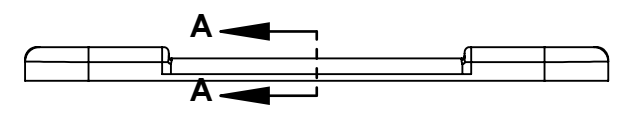
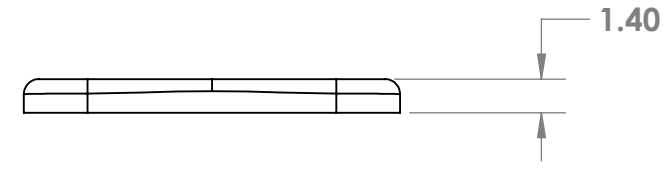
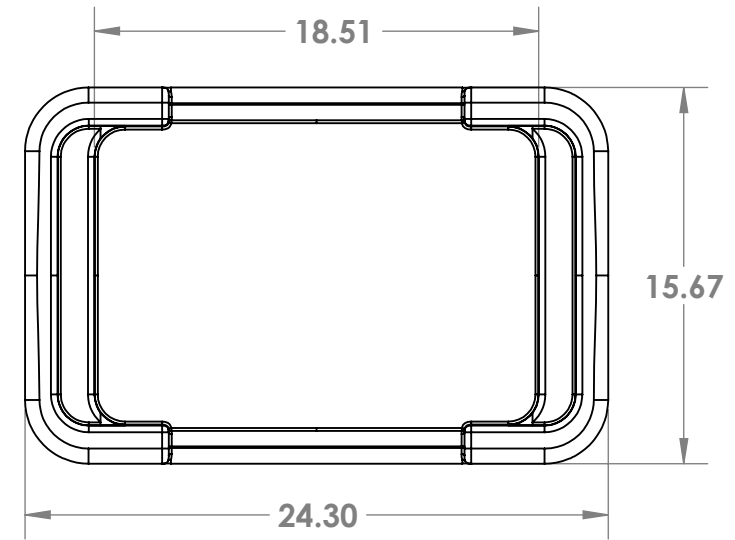
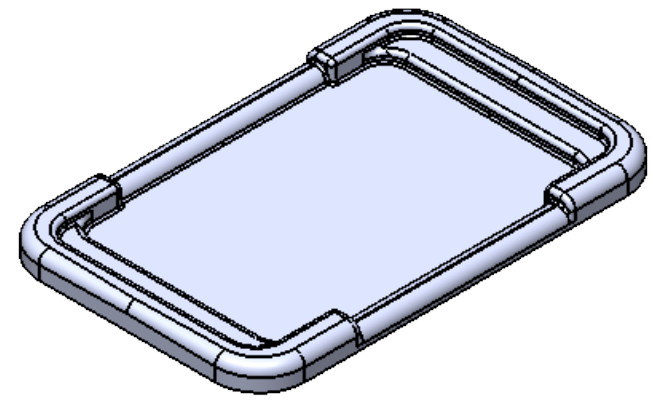


D  
C  
B  
A

D  
C  
B  
A



- Notes:**
- 1.) This is a rotomolded lid to the Meat Lug
  - 2.) For any dimensions or details not shown, please consult Remcon engineering
  - 3.) All corners and edges have radii
  - 4.) Wall thicknesses are for representation only

PROPRIETARY AND CONFIDENTIAL  
THE INFORMATION CONTAINED IN THIS DRAWING IS THE SOLE PROPERTY OF REMCON PLASTICS INC. ANY REPRODUCTION IN PART OR AS A WHOLE WITHOUT THE WRITTEN PERMISSION OF REMCON PLASTICS INC IS PROHIBITED.

		UNLESS OTHERWISE SPECIFIED:		NAME	DATE	Remcon Plastics Inc. 208 Chestnut Street, Reading Pa, 19602		
		DIMENSIONS ARE IN INCHES TOLERANCES: FRACTIONAL ± 1/64 ANGULAR: ± 1/2 DEG TWO PLACE DECIMAL ± .020 in/in THREE PLACE DECIMAL ± .010 in/in		DRAWN	cgg	11-22-2016	TITLE:	
		PROJECT NUMBER:		CHECKED			Meat Lug Lid ver 49	
		MATERIAL <b>polyethylene</b>		ENG APPR.				
NEXT ASSY	USED ON	FINISH <b>hand sand</b>		COMMENTS:		SIZE	DWG. NO.	REV
APPLICATION		DO NOT SCALE DRAWING		Meat Lug lid		<b>B</b>	<b>2620 ver 49</b>	<b>49</b>
						SCALE: 1:8	WEIGHT:	SHEET 1 OF 1