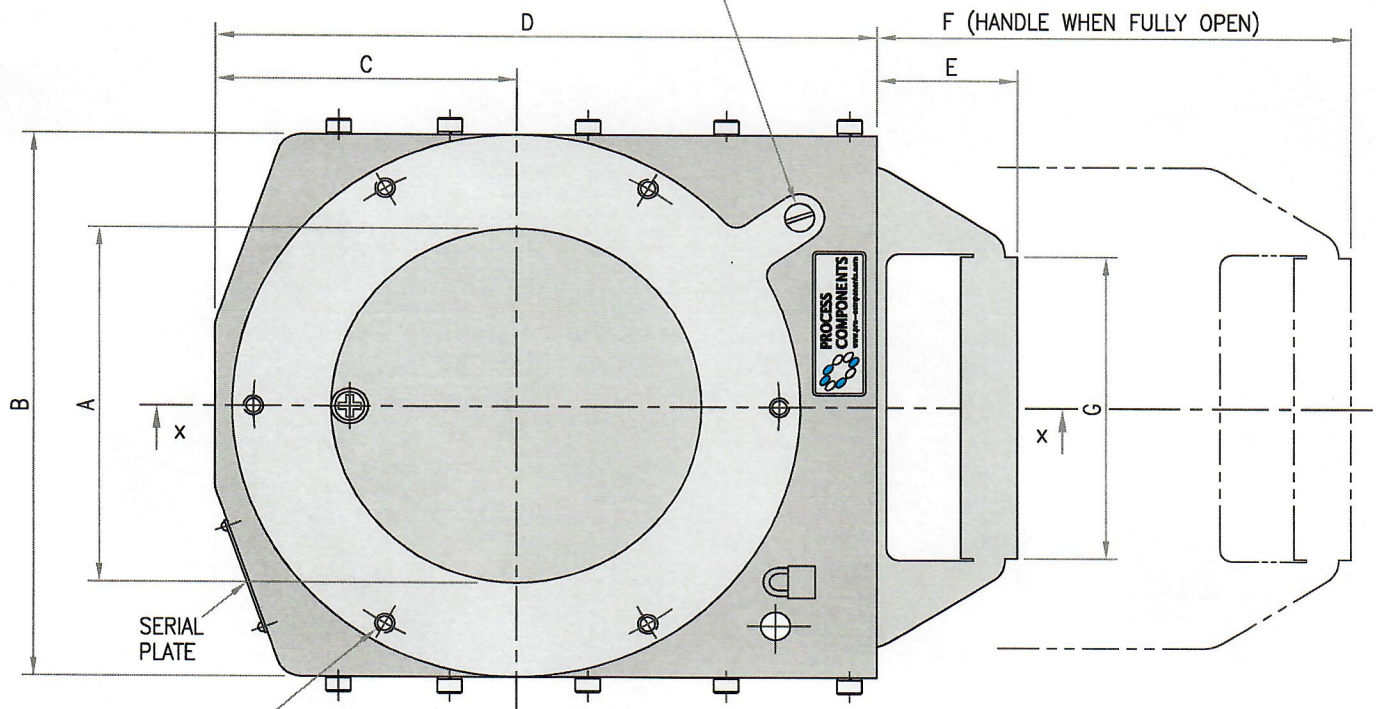


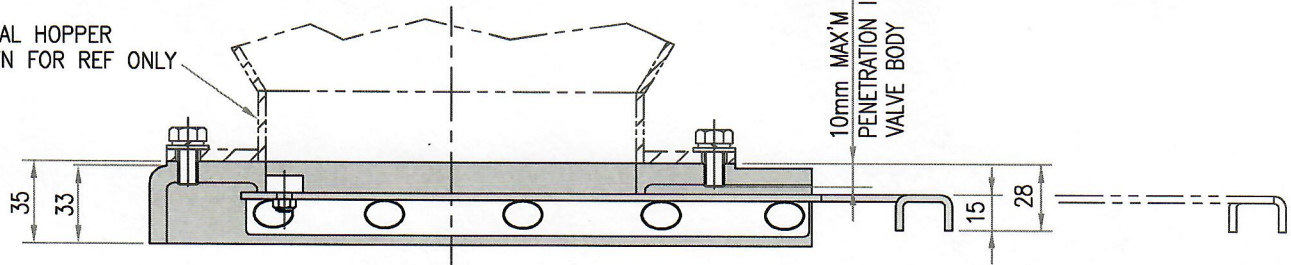
Valve Type	Nom Bore	DIMENSIONS									Net Weight
		All dimensions in mm and weights in Kgs									
		A	B	C	D	E	F	G	H	J	
SV06	150	152	230	122	268	57	192	128	6	213	2.6
SV08	200	206	283	142	313	57	248	128	6	264	3.7
SV12	300	302	406	203	436	57	344	228	8	369	6.7

EARTH BONDING FACILITY:-
M6 SLOTTED PAN HD SCREW &
SHAKEPROOF WASHER



H-HOLES M8 TAPPED THRO' ON 'J' P.C.D.
(ORIENTATION AS SHOWN FOR 6 OFF HOLES
& OFF CTR FOR 8 OFF HOLES)

TYPICAL HOPPER
SHOWN FOR REF ONLY



X-X (FULLY CLOSED)