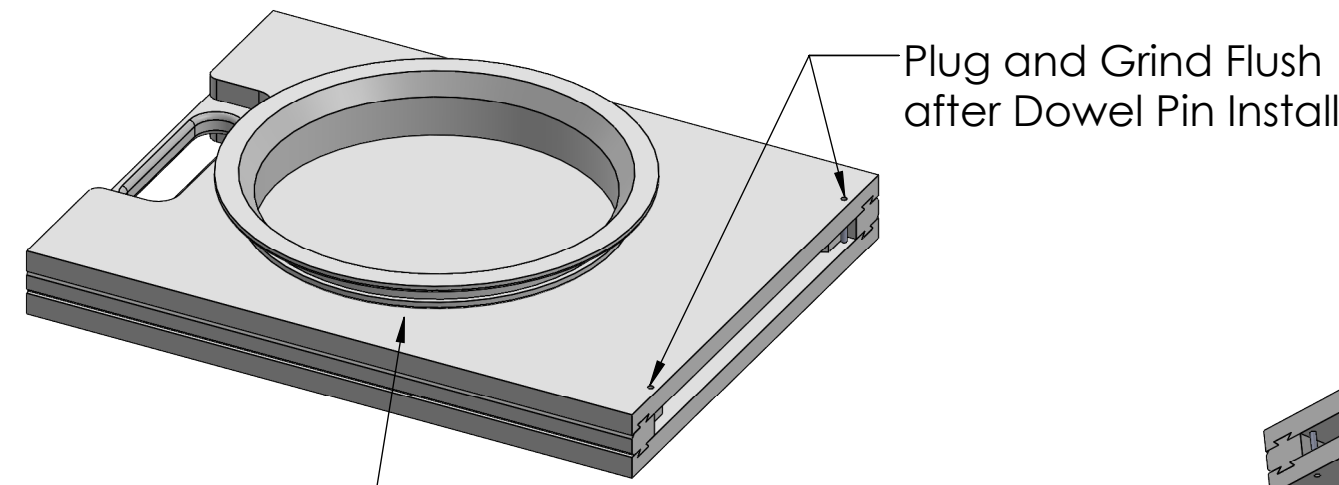


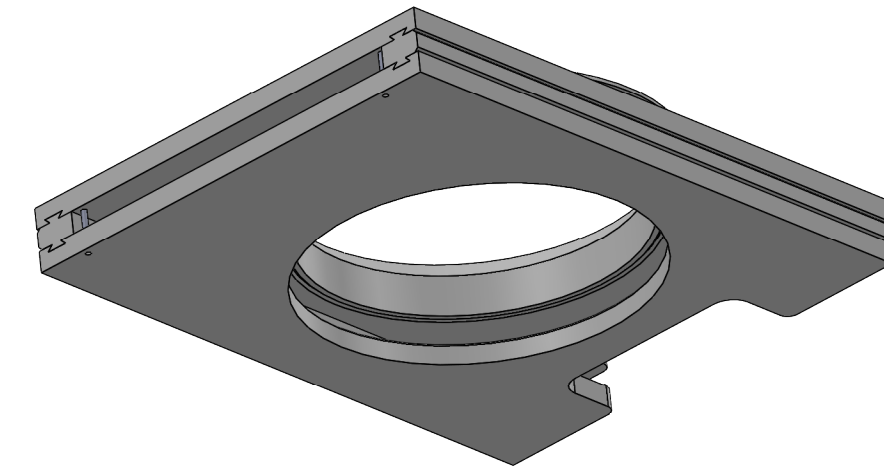
ITEM NO.	PART NUMBER	DESCRIPTION	QTY.
1	052700010001007	Body for 8 inch Fabricated Plastic Slide Gate Valve	2
2	052700010001032	Side Rail, 2 Sided, for 8 inch Fabricated Plastic Slide Gate Valve	2
3	052700010001009	Drop Tube for 8 inch Fabricated Plastic Slide Gate Valve	1
4	052700010001029	Valve Plate, 1/2" for 8 inch Fabricated Plastic Slide Gate Valve	1
5	051800010001001	Dowel Pin 1/8" Dia. x 3/4", SS #97	2

REVISIONS					
ERN/ECN	ZONE	REV.	DESCRIPTION	DATE	APPROVED
0457		A	Drawing Released	4/08/2021	BLS

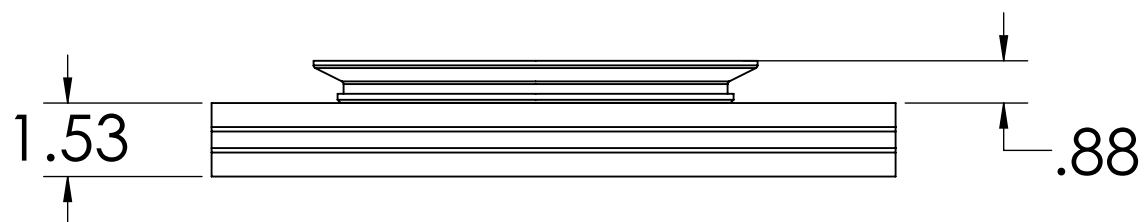
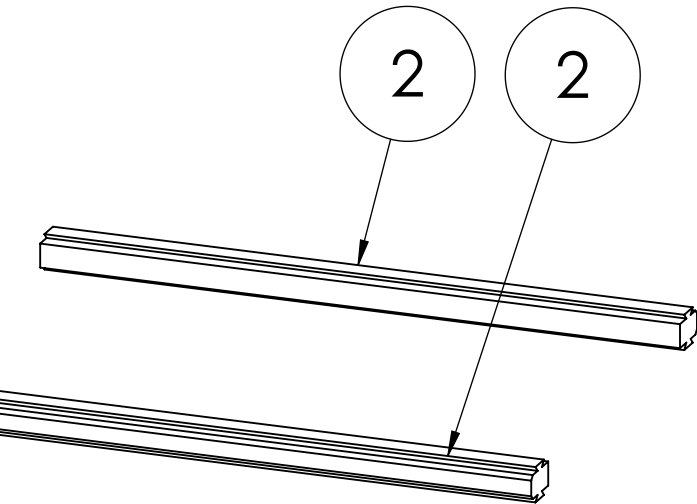
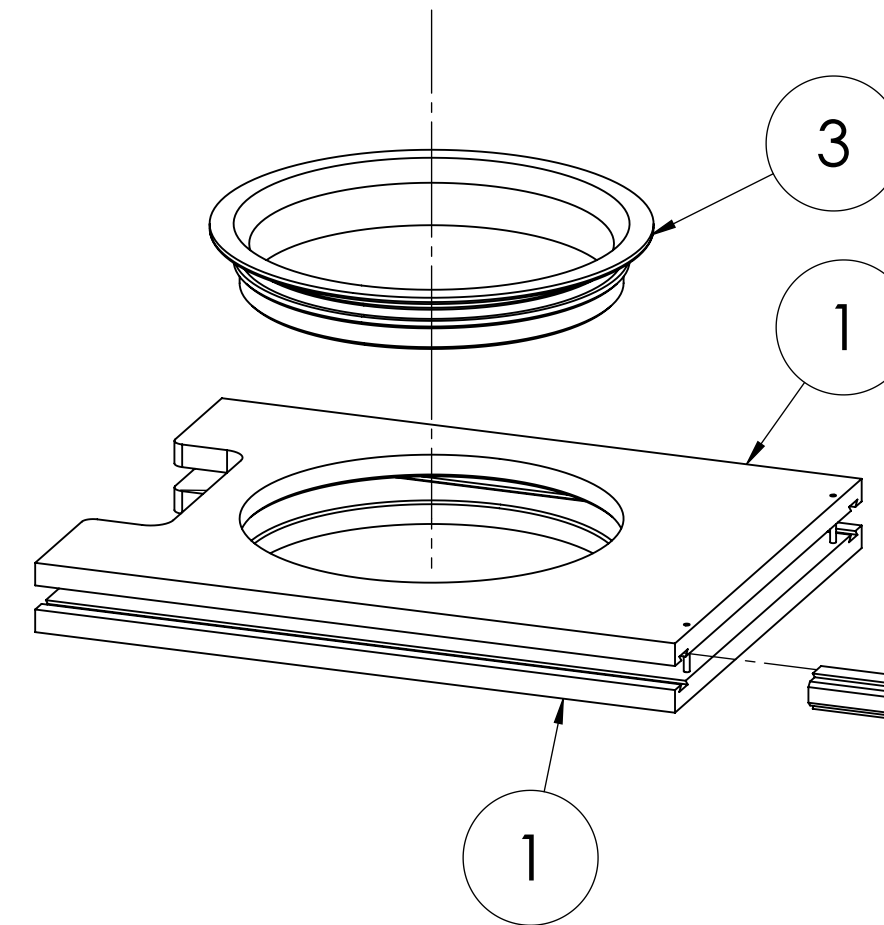
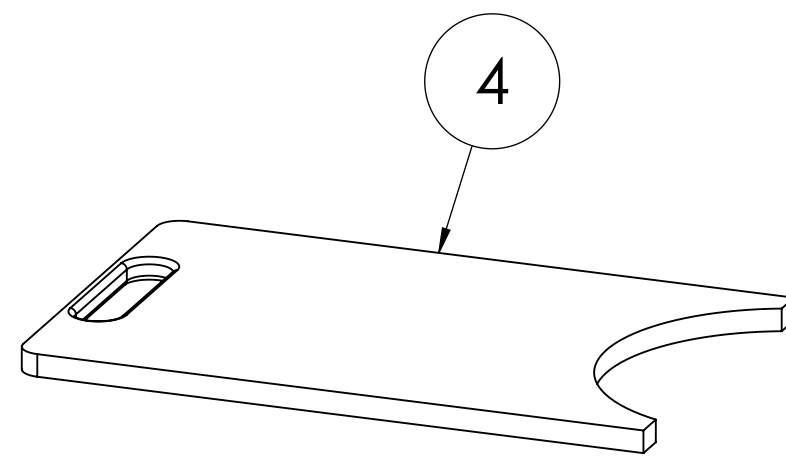
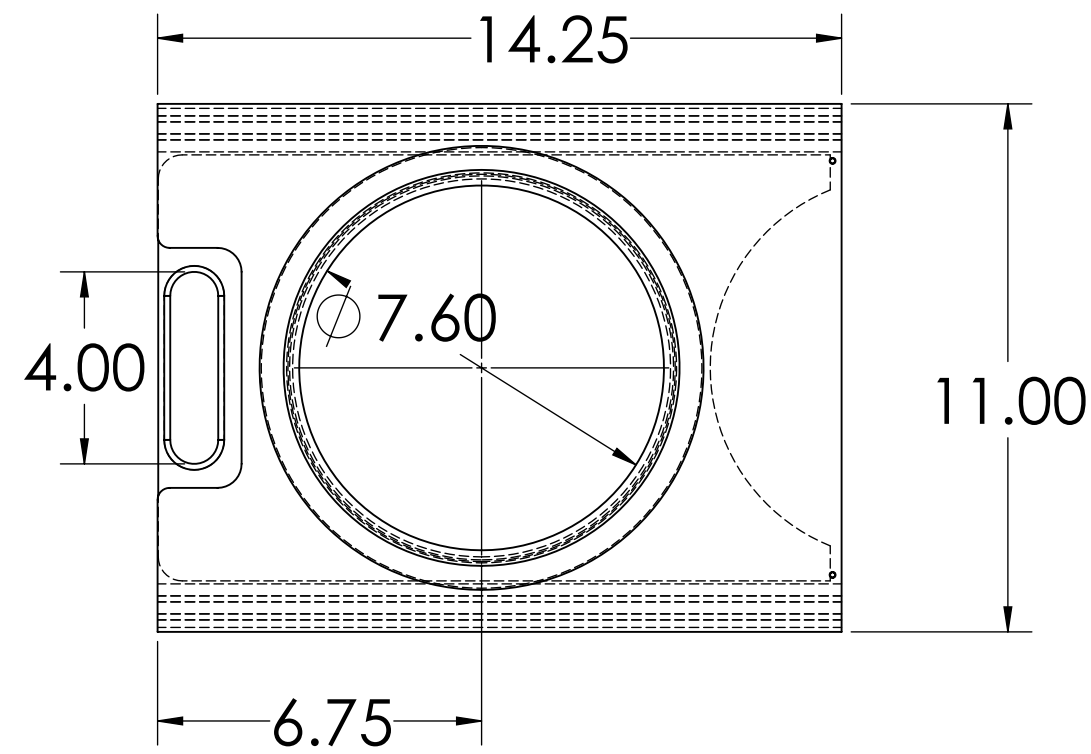


Plug and Grind Flush after Dowel Pin Install

PLACE BODY ON TO BOTTOM OF DROP TUBE AND TACK WELD IN PLACE. THEN FILL GROOVE WITH SINGLE BEAD WELD AND FINISH SMOOTH. USE CARE NOT TO WARP OR DISTORT BODY PLATE. (Typ. 2X)

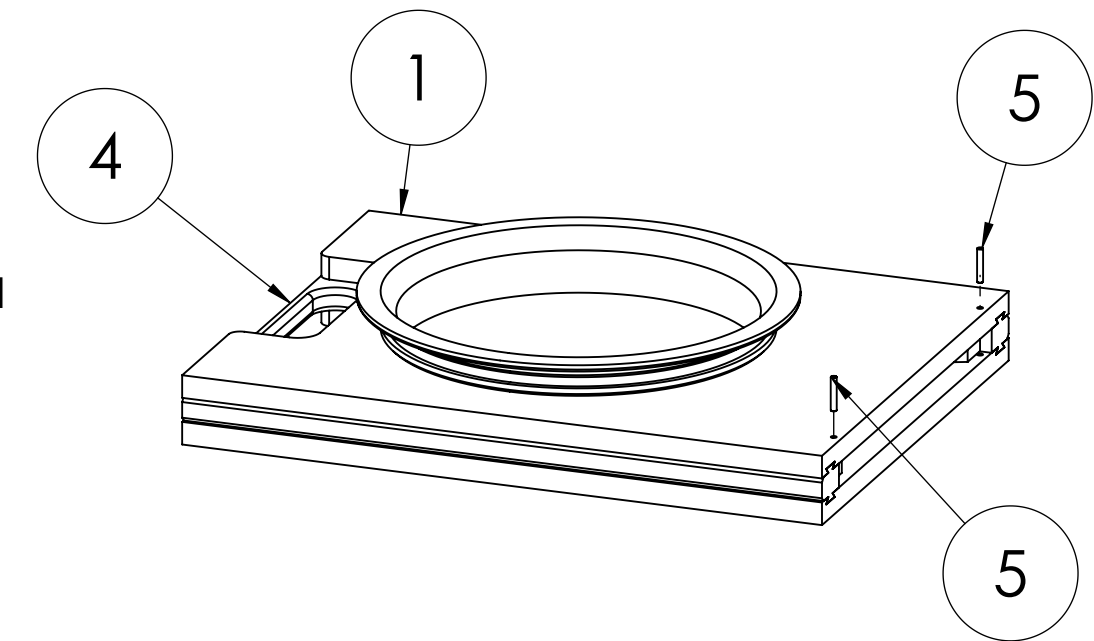


- NOTES:
- DRAWING SHOWS ASSEMBLED VALVE
 - MATERIAL IS HDPE SHEET OR PLATE, NATURAL COLOR, STRESS RELIEVED, AND FDA COMPLIANT
 - FINISH TO BE SMOOTH
 - SEE INDIVIDUAL COMPONENT DRAWINGS AND GEOMETRY FOR INFORMATION AND DIMENSIONS NOT SHOWN



INSTALL SINGLE PASS FINISH WELD BETWEEN TUBE AND BODY JUST BELOW RIB ON DROP TUBE. WELD MUST BE CONSISTENT AND SMOOTH

INSERT RAIL IN EACH SIDE OF BODY WITH LEG FACING CENTER. RAILS SHOULD BE FLUSH WITH BODY AT BOTH ENDS



PROPRIETARY AND CONFIDENTIAL
THE INFORMATION CONTAINED IN THIS DRAWING IS THE SOLE PROPERTY OF REMCON PLASTICS, INC. ANY REPRODUCTION IN PART OR AS A WHOLE WITHOUT THE WRITTEN PERMISSION OF REMCON PLASTICS, INC IS PROHIBITED.

UNLESS OTHERWISE SPECIFIED:
DIMENSIONS ARE IN INCHES
TOLERANCES:
DECIMAL +/-0.010 IN/IN
FRACTIONS N/A
ANGLES +/-1°

MATERIAL
FINISH
DO NOT SCALE DRAWING

NAME
DATE
DRAWN BY: BRS 4/08/2021
APPROVED BY:

TITLE:
**8 Inch, 1X Quick Disconnect,
No Guide Blocks, Fabricated
Slide Gate Valve**
WEIGHT:
SCALE:1:4

REMCON 208 Chestnut Street
PLASTICS, INCORPORATED Reading Pa, 19602
DWG. NO:
052700010001036
SIZE **C** SHEET 1 OF 1 REV **A**